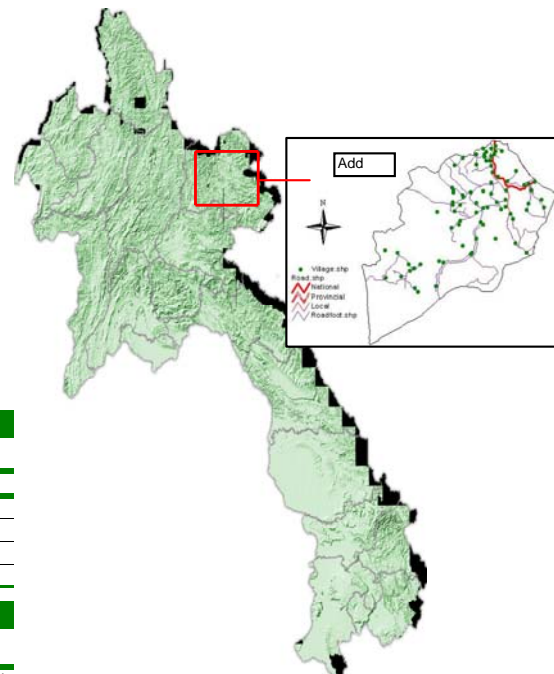


General Information

<b>Huaphanh Province:</b>	<b>Total</b>	<b>Women</b>
Population of Province (NSC; year 2005):	280,780	139,334
Total Number of districts:	8	
<i>Xiengkho, Add, Sobbao, Viengxay, Viengthong, Xamtay, Heuameuang, Xamneua</i>		
Total Number of districts covered by PRF:	6	
<i>Xiengkho, Add, Sobbao, Viengxay, Xamtay, Heuameuang</i>		
<b>Add District:</b>	<b>Total</b>	<b>Women</b>
District Population (VNPA, PRF: 2005)	26,414	13,321
Total Number of Khets:	12	
Total Number of Villages:	78	
Total Number of "Poor" Villages*:	65	
% of villages without access to health services	25%	
% of villages without safe water supply	49%	
% of villages without road	51%	
% of villages without access to school	24%	
Main ethnic groups in the district: (NSC Census 95 in)		
Data is not available		

Maps of Lao PDR showing Huaphanh and Add



Initially requested village needs

Results after Village Needs and priorities Assessment (VNPA) and Prioritization

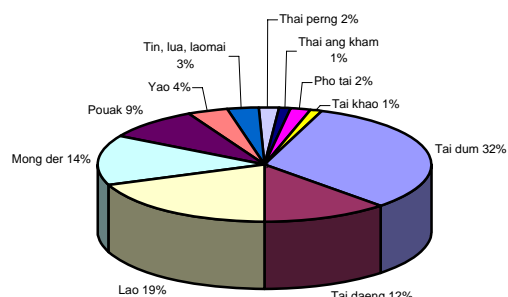
Description	Total	%
Number of Village Needs (activities) expressed by villagers by 3 priorities	228	100%
Number of Village Needs (activities) expressed by women by 3 pr	2	1%
Number of Village Needs (activities) expressed by men by 3 priorities	7	3%
Village Needs after consolidation at Khet level (Khet Priorities)	62	

Selected / approved sub-projects for the period 2005-2006 - Cycle III

Results after sub-project appraisal and District Decision Meeting

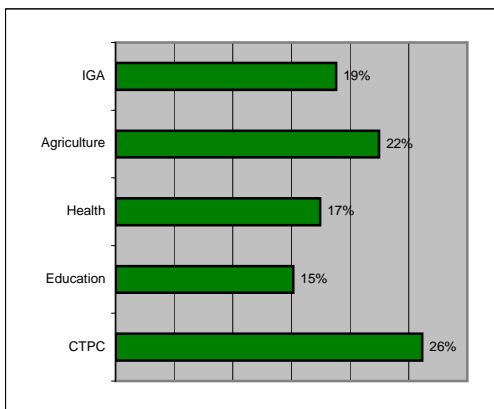
Description	Total	Kip	US\$
PRF Add budget allocation 2005-2006	2,079,000,000		198,000
PRF Contribution to sub-project implementation	2,078,809,387		197,982
Village Contribution (cash / kind) to project implementation	650,755,438		61,977
Total Cost for Sub-Projects:	2,729,564,825		457,959
% of village contribution compared to total cost for sub-projects	23.8%		-
Average PRF contribution per Sub-project	79,954,207		7,615
Average PRF contribution per participating village	26,651,402		2,538
Number of Villages benefiting from 2005-2006 funding round**:	40		51%
Number of Poor Villages benefiting from 2005-2006 funding round	32		
Number and percentage of beneficiaries in 2005-2006 funding round	14,735		56%
Number of Khets benefiting from 2005-2006 funding round	12		-
Number of Sub-Projects to be implemented in 2005-2006 funding round	26		-
Percentage of selected sub-projects proposed by women	0		0%
Average Number of Sub-projects / Khet	2.2		-
Average Number of Village activities / Khet	1.7		-
<b>Sub-project budget allocation per sector</b>	<b>Allocation (Kip)</b>	<b>Percentage %</b>	
Agriculture	294,538,863	14%	
IGA	103,950,000	5%	
Health	325,205,878	16%	
Education	261,942,703	13%	
CTPC	1,093,171,943	53%	
<b>Total:</b>	<b>2,078,809,387</b>	<b>100%</b>	

Main ethnic groups in the district: (NSC)

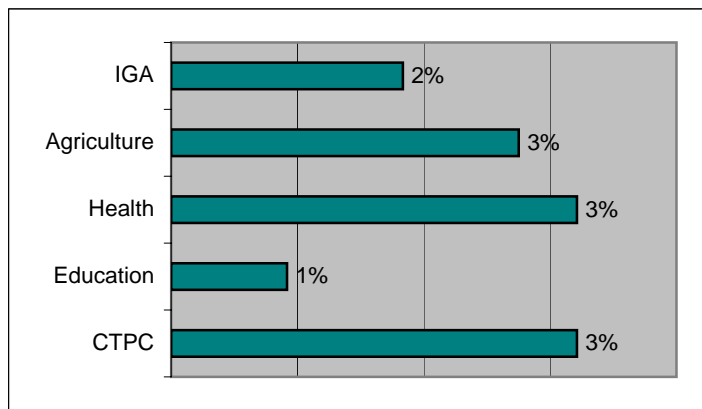


Comparing Chart of Request and subproject implementation 2004-2005 and 2005-2006

Analysis of requested village needs by sector



Analysis of selected PRF sub-projects by sector



10,500 Kip, rate used on the day of District Decision Meeting

Exchange Rate: approx. 1 US\$ =

\* Poverty indicators and "poor" villages are defined by the Prime Minister's Instruction No. 010/PM and the National Statistic Centre.

\*\* village benefiting are village implementing and village get indirect benefiting