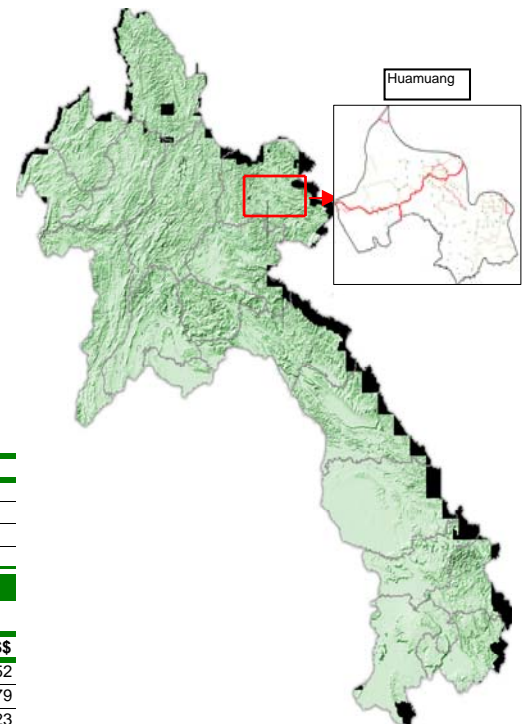


Progress activity of Huameuang District, as end of 2005-2006

General Information

	Total	Women
Huaphanh Province:		
Population of Province (NSC; year 2005):	280,780	139,334
Total Number of districts:	8	
<i>Xiengkho, Add, Sobbao, Viengxay, Viengthong, Xamtay, Heuameuang, Xamneua</i>		
Total Number of districts covered by PRF:	6	
<i>Xiengkho, Add, Sobbao, Viengxay, Xamtay, Heuameuang</i>		
Huameuang District:		
District Population (VNPA, PRF: 2005)	27,324	14,034
Total Number of Khets:	11	
Total Number of Villages:	85	
Total Number of "Poor" Villages*:	81	
% of villages without access to health services	48%	
% of villages without safe water supply	68%	
% of villages without road	42%	
% of villages without access to school	9%	
Main ethnic groups in the district:(NSC Census 95)		
<i>Phong, Khmu, Hmong, Lao, Phouthai</i>		

Maps of Lao PDR showing Huaphanh and Huameuang



Initially requested village needs

Results after Village Needs and priorities Assessment (VNPA) and Prioritization

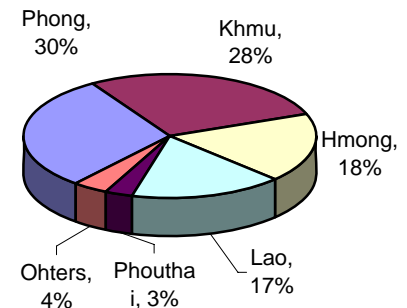
Description	Total	%
Number of Village Needs (activities) expressed by villagers by 3 priorities	241	100%
Number of Village Needs (activities) expressed by women by 3 priorities	13	5%
Number of Village Needs (activities) expressed by men by 3 priorities	22	9%
Village Needs after consolidation at Khet level (Khet Priorities)	65	

Selected / approved sub-projects for the period 2005-2006 - Cycle III

Results after sub-project appraisal and District Decision Meeting

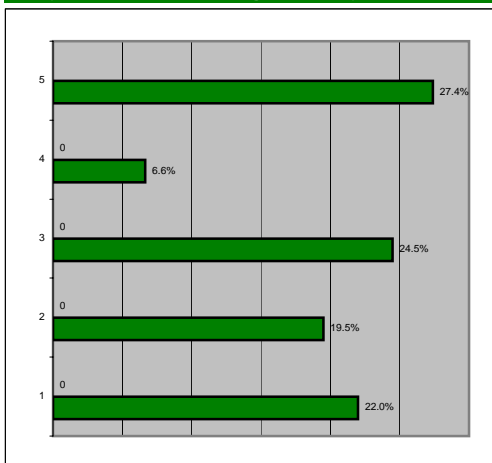
Description	Total	Kip	US\$
PRF Pathoumphone budget allocation 2005-2006	2,467,000,000		234,952
PRF Contribution to sub-project implementation	2,453,625,521		233,679
Village Contribution (cash / kind) to project implementation	341,495,736		32,523
Total Cost for Sub-Projects:	2,795,121,257		266,202
% of village contribution compared to total cost for sub-projects	12%		-
Average PRF contribution per Sub-project	74,352,289		7,081
Average PRF contribution per participating village	28,866,183		2,749
Number of Villages benefiting from 2005-2006 funding round**:	39		46%
Number of Poor Villages benefiting from 2005-2006 funding round	36		
Number and percentage of beneficiaries in 2005-2006 funding round	12,672		46%
Number of Khets benefiting from 2005-2006 funding round	11		-
Number of Sub-Projects to be implemented in 2005-2006 funding round	33		-
Number and percentage of selected sub-projects proposed by women	1		3.0%
Average Number of Sub-projects / Khet	3		-
Average Number of Village activities / Khet	2		-
Sub-project budget allocation per sector	Allocation (Kip)	Percentage %	
Agriculture	209,708,130	8.5%	
IGA	241,314,785	9.8%	
Health	1,243,476,866	50.7%	
Education	188,112,587	7.7%	
CTPC	571,013,153	23.3%	
Total:	2,453,625,521	100%	

Main ethnic groups in the district: (NSC)

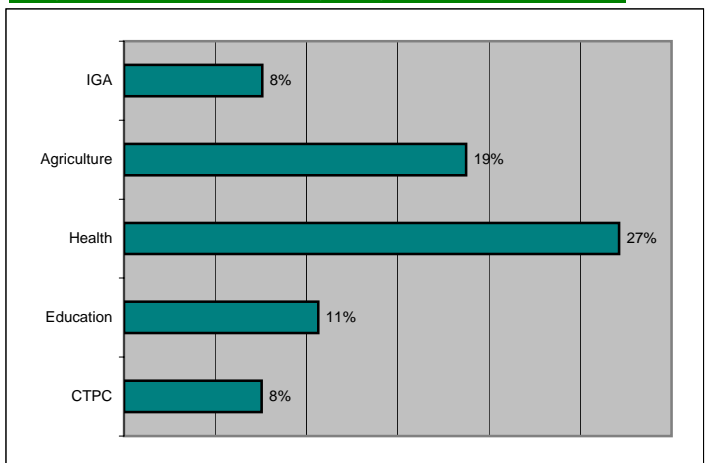


Comparing Chart of Request and subproject implementation 2004-2005 and 2005-2006

Analysis of requested village needs by sector



Analysis of selected PRF sub-projects by sector



Exchange Rate: approx. 1 US\$ = 10,500 Kip, rate used on the day of District Decision Meeting

* Poverty indicators and "poor" villages are defined by the Prime Minister's Instruction No. 010/PM and the National Statistic Centre

** village benefiting are village implementing and village get indirect benefit