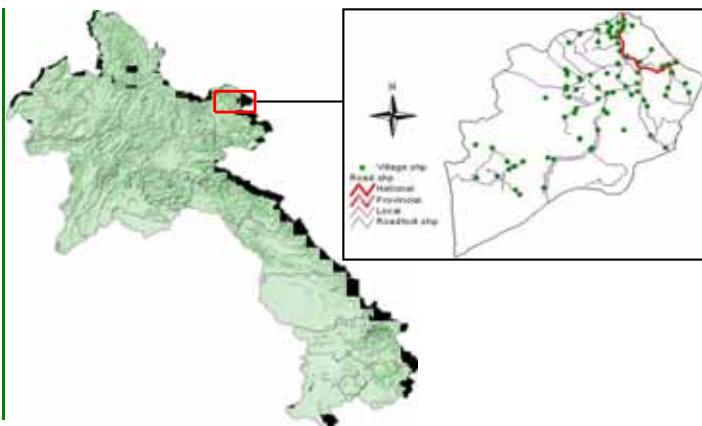


Progress activity of Add District, as of June 2004

General Information

Huaphanh Province:	Total	Women
Population of Province (NSC; year 2002):	303,700	152,700
Total Number of districts:	8	
<i>Xiengkho, Add, Sobbao, Viengxay, Viengthong, Xamtay, Heuameuang, Xamneua</i>		
Total Number of districts covered by PRF:	3	
<i>Xiengkho, Add, Sobbao</i>		
Add District:	Total	Women
District Population (2003)	25,942	
Total Number of Khets:	12	
Total Number of Villages:	76	
Total Number of "Poor" Villages*:	59	
% of villages without access to health services	23%	
% of villages without safe water supply	24%	
% of villages without road	50%	
% of villages without access to School	62%	

Maps of Lao PDR showing Huaphanh and Add



Initially requested village needs

Results after Village Needs and priorities Assessment and Prioritization

Description	Total	%
Number of Village Needs (activities) expressed by villagers by 6 priorities	456	
Number of Village Needs (activities) expressed by women by 3 priorities	115	49%
Number of Village Needs (activities) expressed by men by 3 priorities	117	51%
Village Needs after consolidation at Khet level (Khet Priorities)	145	

Selected / approved sub-projects for the period 2003-2004 - Cycle 1

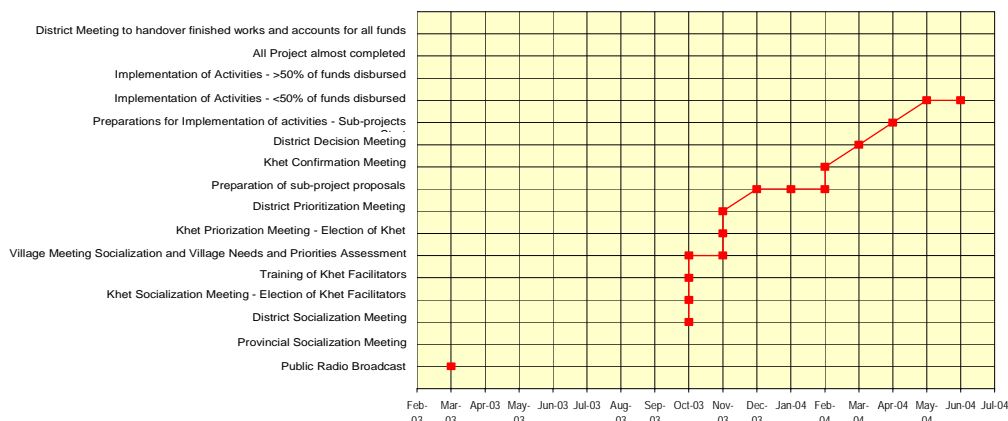
Results after sub-project appraisal and District Decision Meeting

Description	Total	Kip	US\$
PRF Add budget allocation 2003	1,164,688,000	112,000	
PRF Contribution to sub-project implementation	1,177,815,985	113,475	
Village Contribution (cash / kind) to project implementation	477,985,000	45,965	
Total Cost for Sub-Projects:	1,655,800,985	159,227	
% of village contribution compared to total cost for sub-projects	28.9%	-	
Average PRF contribution per Sub-project	35,691,393	3,432	
Average PRF contribution per participating village	22,222,943	2,137	
Number of Villages benefiting from 2003 funding round	53	-	
Number of Poor Villages benefiting from 2003 funding round	45	-	
Number and percentage of beneficiaries in 2003 funding round	18,399	71%	
Number of Khets benefiting from 2003 funding round	12	-	
Number of Sub-Projects to be implemented in 2003 funding round	33	-	
Percentage of selected sub-projects proposed by women		53%	
Average Number of Sub-projects / Khet	2.8	-	
Average Number of Village activities / Khet	1.6		

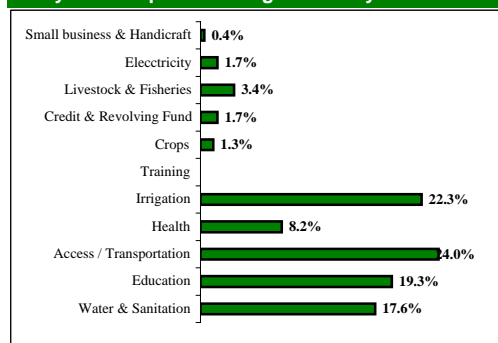
Sub-project budget allocation per sector	Allocation (Kip)	Percentage %
Water & Sanitation	463,518,124	17.4 %
Access/ Transport	292,003,176	44.9 %
Irrigation	268,142,625	13.0 %
Education	154,152,060	24.6 %
Total:	1,177,815,985	100 %

Chart of progress

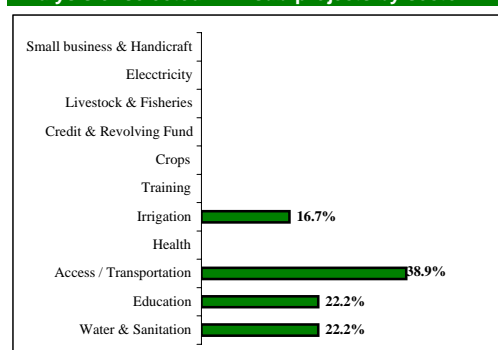
Activity progress for Add District



Analysis of requested village needs by sector



Analysis of selected PRF sub-projects by sector



Exchange Rate: approx. 1 US\$ = 10,399 Kip, rate used on the day of District Decision Meeting

* Poverty indicators and "poor" villages are defined by the Prime Minister's Instruction No. 010/PM and the National Statistic Centre.