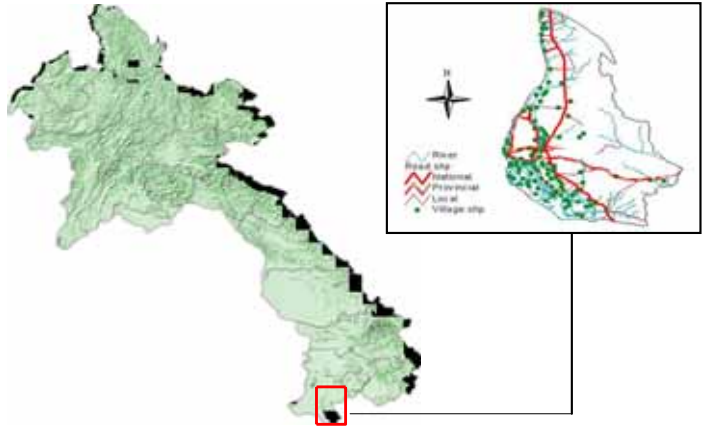


Progress activity of Khong District, as of June 2004

General Information

	Total	Women
Champasack Province:		
Population of Province (NSC; year 2003):	622,400	318,700
Total Number of districts:	10	
<i>Mounlapamok, Khong, Pathoumphone, Sukuma, Pakse, Sanasomboun, Bachieng, Paksong, Phonethong and Champasack.</i>		
Total Number of districts covered by PRF:	4	
<i>Pathoumphone, Sukuma, Kkong and Mounlapamok</i>		
Khong District:		
District Population (2003)	72,746	
Total Number of Khets:	10	
Total Number of Villages:	137	
Total Number of "Poor" Villages*:	46	
% of villages without access to health services	7%	
% of villages without safe water supply	24%	
% of villages without road	10%	
% of villages without access to School	0%	
Main ethnic groups in the district: (NSC Census 95)		
Lao		

Maps of Lao PDR showing Champasack and Khong



Initially requested village needs

Results after Village Needs and priorities Assessment and Prioritization

Description	Total	%
Number of Village Needs (activities) expressed by villagers by 6 priorities	790	
Number of Village Needs (activities) expressed by women by 3 priorities	201	49%
Number of Village Needs (activities) expressed by men by 3 priorities	209	51%
Village Needs after consolidation at Khet level (Khet Priorities)	266	

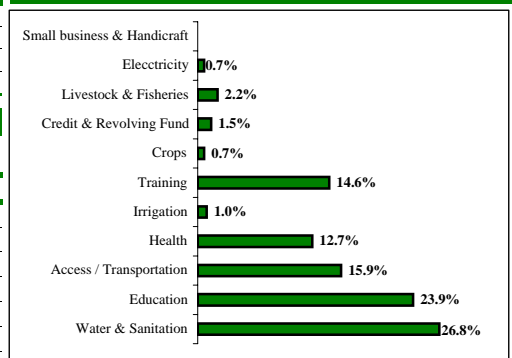
Selected / approved sub-projects for the period 2003-2004 - Cycle I

Results after sub-project appraisal and District Decision Meeting

Description	Total	Kip	US\$
PRF Khong budget allocation 2003	1,102,500,000		105,000
PRF Contribution to sub-project implementation	1,041,859,029		102,200
Village Contribution (cash / kind) to project implementation	64,359,500		6,129
Total Cost for Sub-Projects:	1,106,218,529		105,354
% of village contribution compared to total cost for sub-projects	5.8%		-
Average PRF contribution per Sub-project	2,011,234		3,191
Average PRF contribution per participating village	846,836		1,343
Number of Villages benefiting from 2003 funding round	76		-
Number of Poor Villages benefiting from 2003 funding round	29		-
Number and percentage of beneficiaries in 2003 funding round	35,500		49%
Number of Khets benefiting from 2003 funding round	10		-
Number of Sub-Projects to be implemented in 2003 funding round	32		-
Percentage of selected sub-projects proposed by women			52%
Average Number of Sub-projects / Khet	3.2		-
Average Number of Village activities / Khet	2		-

Sub-project budget allocation per sector	Allocation (Kip)	Percentage %
Water & Sanitation	361,959,988	59.2%
Access/ Transport	8,794,050	1.3%
Health	8,496,993	3.9%
Education	652,895,558	15.8%
Training	9,712,440	19.7%
Total:	1,041,859,029	100%

Analysis of requested village needs by sector



Analysis of selected PRF sub-projects by sector

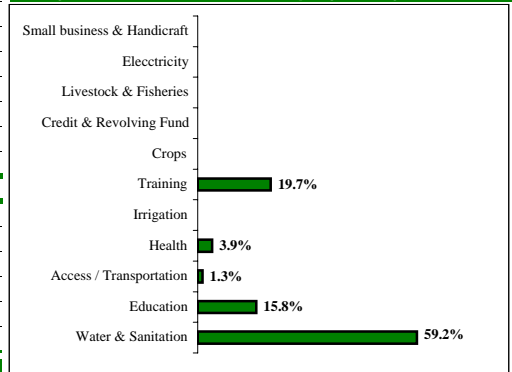
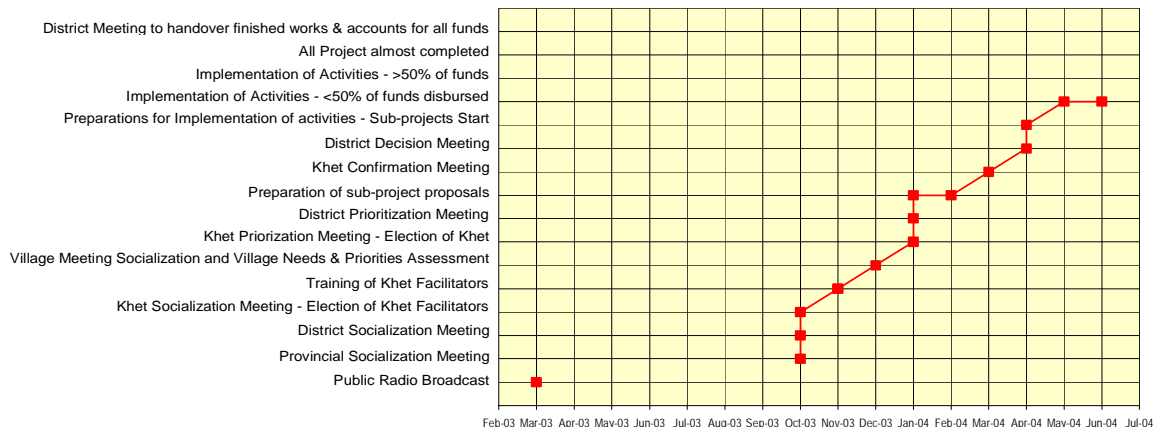


Chart of progress

Activity progress for Khong District



Exchange Rate: approx. 1 US\$ = 10,204 Kip, rate used at the day of District Decision Meeting

* Poverty indicators and "poor" villages are defined by the Prime Minister's Instruction No. 010/PM and the National Statistic Centre.