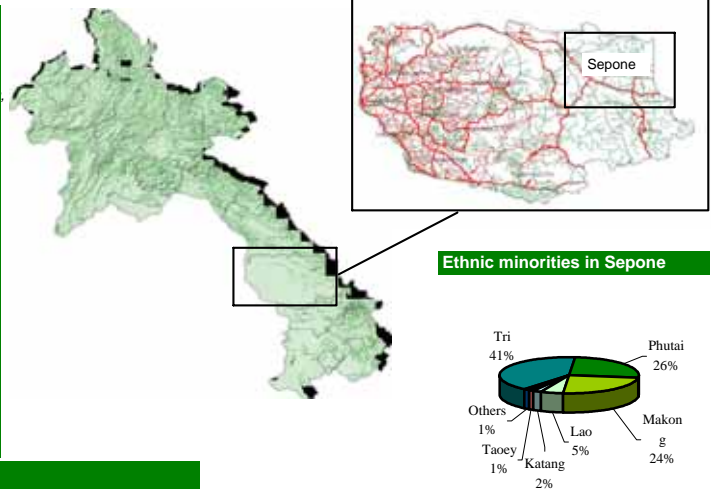


# Progress activity of Sepone District, as of June 2004

## General Information

<b>Savannakhet Province:</b>	<b>Total</b>	<b>Women</b>
Population of Province (NSC; year 2003):	833,900	425,400
Total Number of districts:	15	
<i>Sepone, Nong, Vilaboury, Khanthabouly, Outhoumphone, Atsapangthong, Phine, Thapangthong, Songkhone, Champhone, Xonbully, Xaybully, Atsapone, Xayphouthong and Thaphanlanxay.</i>		
Total Number of districts covered by PRF:	3	
<i>Sepone, Nong and Vilaboury</i>		
<b>Sepone District:</b>	<b>Total</b>	<b>Women</b>
District Population (2003)	41,067	20,208
Total Number of Khets:	20	
Total Number of Villages:	159	
Total Number of "Poor" Villages*:	144	
% of villages without access to health services	83%	
% of villages without safe water supply	78%	
% of villages without road	45%	
% of villages without access to School	44%	
Main ethnic groups in the district: (NSC Census 95 in former Xiengkho District)		
<i>Tri, Phutai, Mako, Lao and Katang.</i>		

## Maps of Lao PDR showing Savannakhet & Sepone



## Initially requested village needs

### Results after Village Needs and priorities Assessment and Prioritization

Description	Total	%
Number of Village Needs (activities) expressed by 6 priorities	952	
Number of Village Needs (activities) expressed by women by 3 priorities	215	46%
Number of Village Needs (activities) expressed by men by 3 priorities	248	54%
Village Needs after consolidation at Khet level (Khet Priorities)	228	

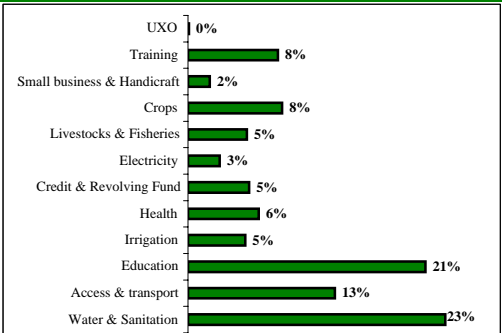
## Selected / approved sub-projects for the period 2003-2004 - Cycle I

### Results after sub-project appraisal and District Decision Meeting

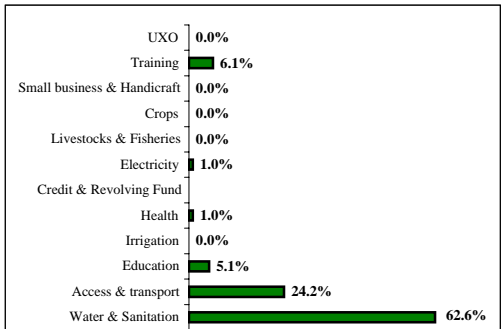
Description	Total	Kip	US\$
PRF Sepone budget allocation 2003	1,228,851,000		117,000
PRF Contribution to sub-project implementation	1,869,867,624		179,117
Village Contribution (cash / kind) to project implementation	184,059,660		17,524
Total Cost for Sub-Projects:	2,053,927,284		195,556
% of village contribution compared to total cost for sub-projects		11.2%	
Average PRF contribution per Sub-project	58,433,363	5,563	
Average PRF contribution per participating village	21,248,496	2,023	
Number of Villages benefiting from 2003 funding round	88	-	
Number of Poor Villages benefiting from 2003 funding round	76	-	
Number and percentage of beneficiaries in 2003 funding round	22,729	55%	
Number and percentage of Khets benefiting from 2003 funding round	20	-	
Number of Sub-Projects to be implemented in 2003 funding round	32	-	
Percentage of selected sub-projects proposed by women		51.2%	
Average Number of Sub-projects / Khet	1.6	-	
Average Number of Village activities / Khet	5		

Sub-project budget allocation per sector	Allocation (Kip)	Percentage %
Water & Sanitation	926,701,437	62.6 %
Access/ Transport	330,685,768	24.2 %
Health	111,228,468	1.0 %
Education	379,796,823	5.1 %
Training	9,404,451	6.1 %
Electricity	1,933,920	1.0 %
<b>Total:</b>	<b>1,757,816,947</b>	<b>100 %</b>

## Analysis of requested village needs by sector

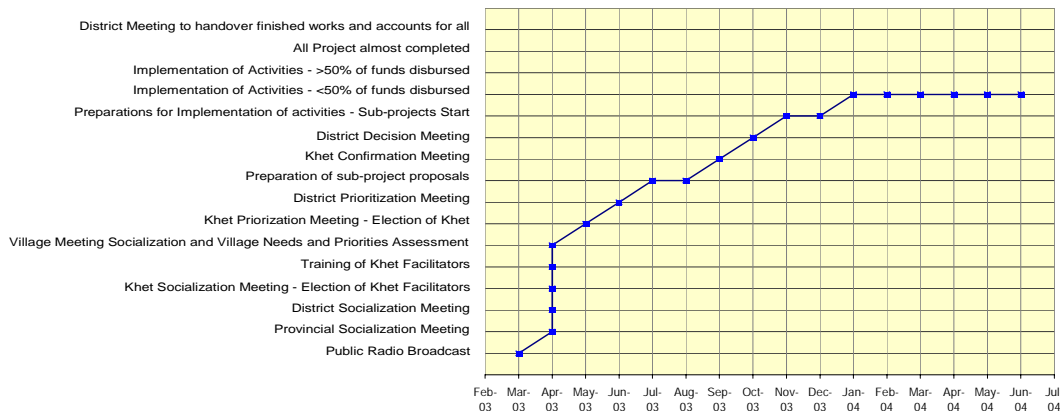


## Analysis of selected PRF sub-projects by sector



## Chart of progress

### Activity progress for Sepone District



Exchange Rate: approx. 1 US\$ =

10,503 Kip, rate used at the day of District Decision Meeting

\* Poverty indicators and "poor" villages are defined by the Prime Minister's Instruction No. 010/PM and the National Statistic Centre.