

ຄະນະພັດທະນາຊຸມນະບົດ ແລະ ລົບລ້າງຄວາມທຸກຍາກຢູ່ຂັ້ນສູນກາງ  
National Committee for Rural Development and Poverty Eradication



ກອງທຶນຫຼຸດຜ່ອນຄວາມທຸກຍາກ Poverty Reduction Fund

ໂຄງການປັບປຸງຊີວິດການເປັນຢູ່ ເພື່ອຄ້າປະກັນດ້ານໂພຊະນາການ  
Livelihood Opportunity and Nutrition Gains

# MONITORING AND EVALUATION



# Monitoring and Evaluation

**Monitoring:** Process of continuously collecting information about the progress of the **Activities & Output**



**Evaluation:** Process periodic collection of information to measure the **Outcomes** and **Impacts** and effectiveness of the activities

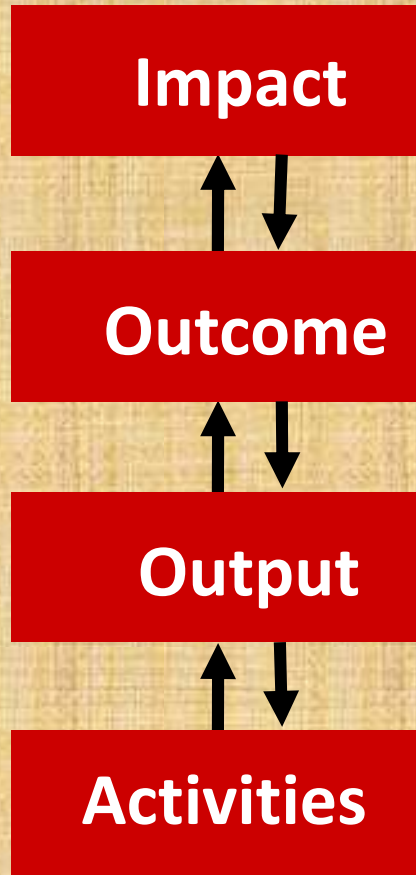


To monitor project benefits and evaluate them in order to draw recommendations for ensuring the further project benefits.

# Data



# Level of Indicator



- **Goal or impact:** 3<sup>rd</sup> Level Results Indicators
- **Purpose or outcomes:** 2<sup>nd</sup> Level Results Indicators
- **Outputs:** 1<sup>st</sup> Level Results Indicators
- Activities under Work Plans

# Outputs: 1<sup>st</sup> Level Results Indicators

- Physical progress, quantitative (numbers and percentages)
  - Number of persons trained
  - Number of SHG formed
  - Number of active savers/borrowers from SHG
  - Number of VNC established

# Outputs



## **Purpose (outcomes): 2<sup>nd</sup> Level Results Indicators**

- Number of SHG operational/functional
- Number of farmers adopting technology recommended by project
- Number of Farmers reporting increase in income
- Number of households with improved nutrition

## **Goal (impact): 3<sup>rd</sup> Level Results Indicators**

- Number of HHs with improved in household assets
- Reduction in Poverty
- Reduction in the prevalence of child malnutrition



# Impact



# PRF LONG LOG-FRAME Indicator

1. Direct Project Beneficiaries: 24,600 -**Quarterly**
  - i. At least 50% should be women
2. Decision-making on allocation of grant resources involve at least 50% women, and 60% poorest community members-**Quarterly**
3. 60% of targeted HHs that adopt improved pro-nutrition livelihood activities -**Final Evaluation by PRF**

## **Component-1**

1. 260 Self-Help Groups supported-**Quarterly**
2. 60% of SHGs getting satisfactory performance rating-**Quarterly**
3. 50% of leadership positions in SHGs that are held by women-**Quarterly**
4. 70% of SHGs that express satisfaction with quality of services provided-**Baseline and Final Impact survey by firm**

# PRF LONG LOGFRAME Indicator

## Component-2: Community Asset Creation

1. type of livelihood activities supported by seed grants- **Quarterly**
2. 70% of SHG members reporting increased livelihood opportunities-**Baseline and Final Impact survey by firm**
3. 10% increase in income of SHG members - **Baseline and Final Impact survey by firm**

# PRF LONG LOGFRAME Indicator

## **Component-3: pro-nutrition livelihood activities**

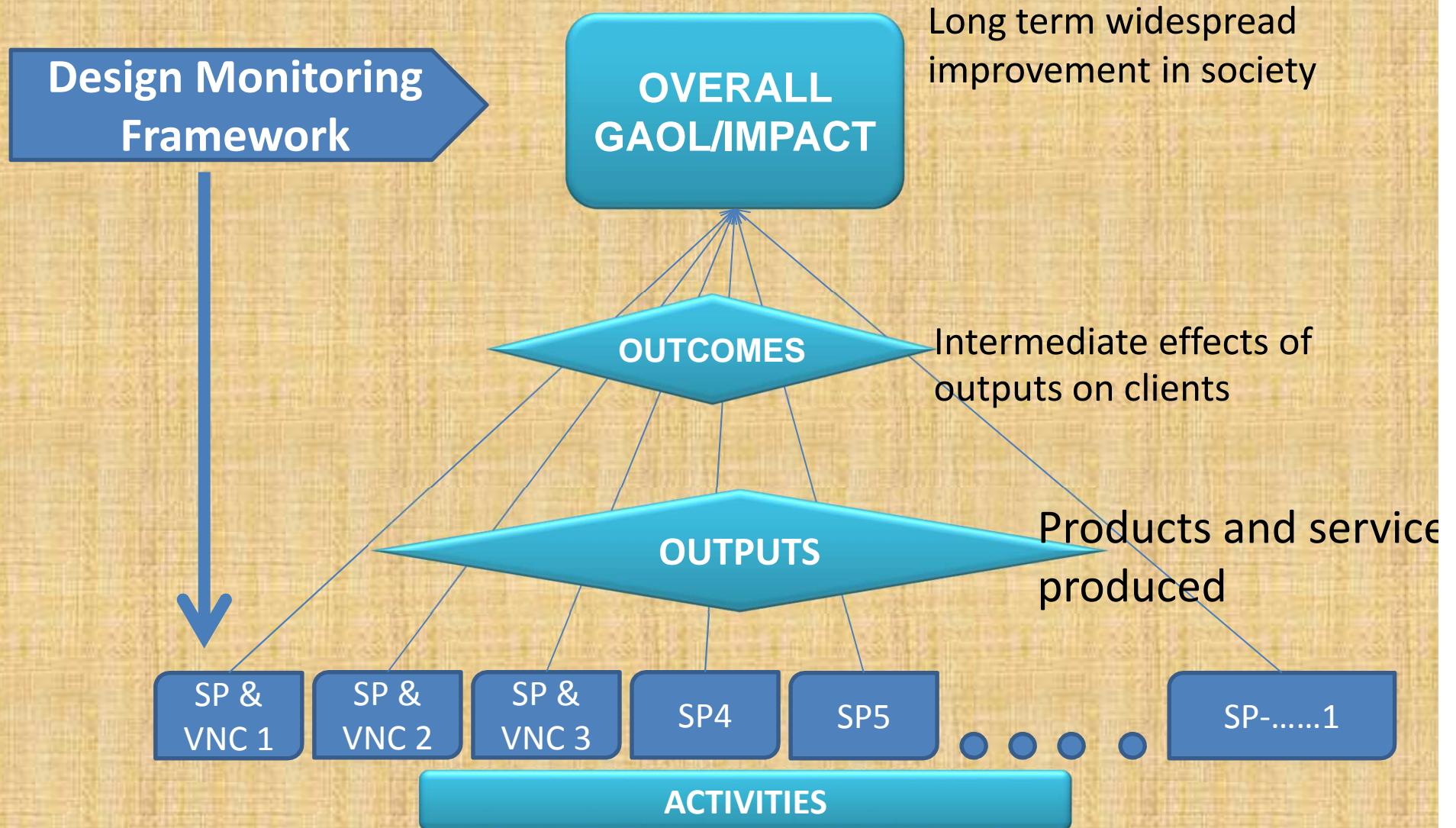
1. type of nutrition activities supported by project-**Quarterly**
2. Behavior change strategy related to nutrition with links to livelihoods, designed and rolled out in target villages- **Quarterly**
3. 50% % of women in SHGs that have introduced a more balanced diet-**Baseline and Final Impact survey by firm**

# PRF LONG LOGFRAME Indicator

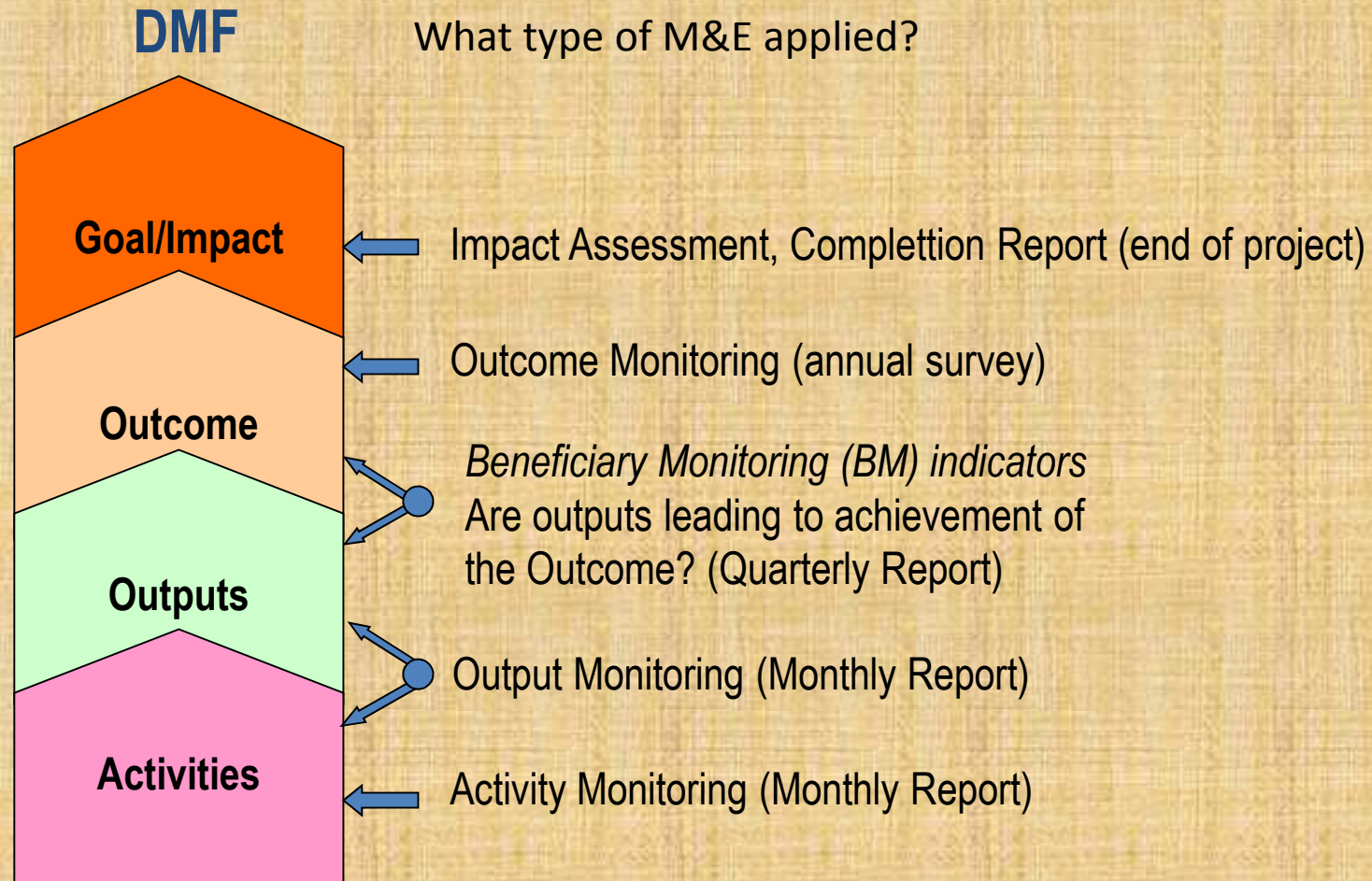
## **Component-4: Monitoring and Impact Evaluation**

1. 3 Annual Progress reports prepared on time
2. MIS improved to produce necessary information for monitoring program effectiveness and results

# The Overall Concept



# M&E CONCEPT



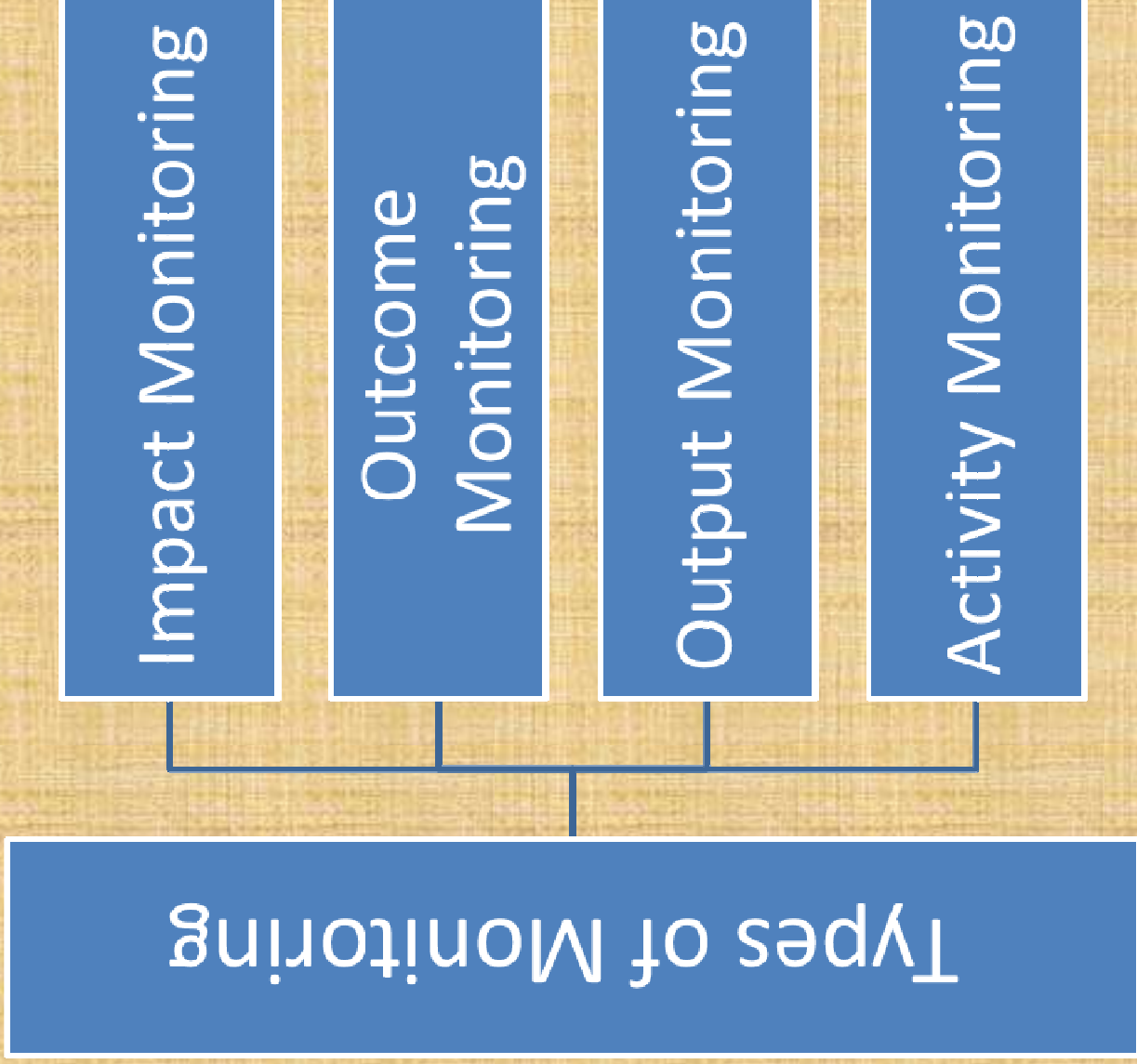
# Types of Monitoring

Impact Monitoring

Outcome  
Monitoring

Output Monitoring

Activity Monitoring





# M&E MATRIX

DMF Elements	Indicator (including targets)	Reference	Data source	Frequency of collection	Responsibility of collection	Collection methods
Impact	3 <sup>rd</sup> level	Baseline		Project completion	3 <sup>rd</sup> parties/ donors	Baseline/Impact Survey
Outcomes	2 <sup>nd</sup> level	Baseline	M&E and progress report	Annually	National level	Outcome monitoring/ survey
Outputs	1 <sup>st</sup> level	Baseline	Progress Report	Quarterly	Provincial level	Output monitoring sheets
Activities	Activity indicators	AWPB/Subproject Activity Plan	Physical Progress Report	Monthly	District level	Activity Monitoring sheets

# Activity Monitoring

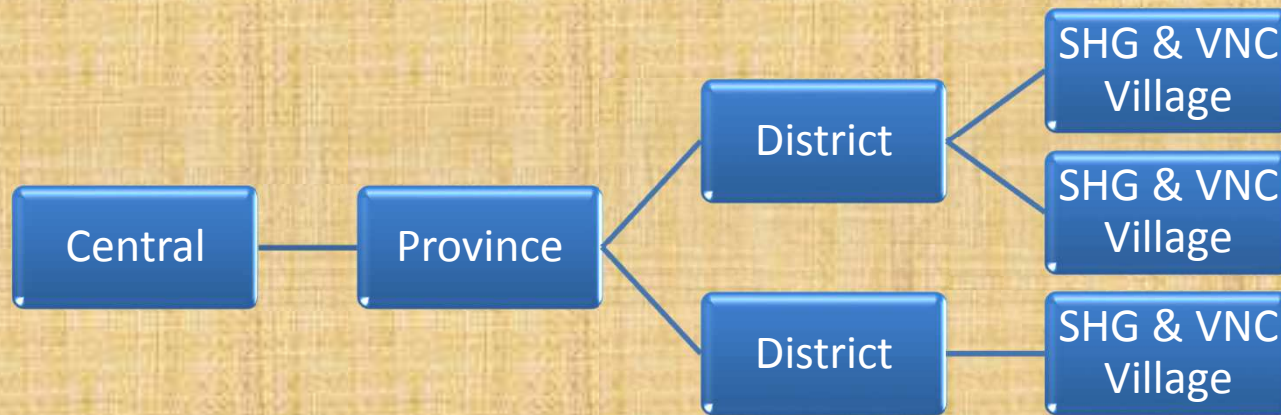
- Annual Work Plan and Budget
- Subproject Plans
- VCN Investment Plans

# Output Monitoring



A results-based monitoring system should provide timely and relevant feedback to project staff on the quality of the activities as well as progress toward achieving established end-line output targets for all activities.

# Level of Output Monitoring



**Data Processing & Report**

**Data Summarization**

**Data Collection**

# Outcome and Impact Monitoring

- Baseline of project
- PRA of Target Villages
- Annual Outcome Assessment Survey
- Impact Assessment Survey

