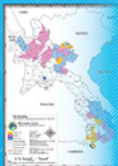


# GIS-MAPPING PRODUCTS CATALOGUE 2015



## PRF targeted Provinces and Districts

### 1. PHONGSALY:

- Khua
- Samphanh
- May

### 2. Louangnamtha:

- Nalae
- Long
- Viengphoukha

### 3. Oudomxay:

- Nga
- Namor
- Pakbeng
- Hoon
- Beng
- Xay

### 4. Houaphan:

- Xiengkhor
- Xamneua
- Xamtay
- Viengthong

- Viengxay
- Huameuang

### 5. Xiangkhouang:

- Khoun
- Thathom
- Nonghed
- Mork

### 6. Luang Prabang:

- Chomphet
- Nambak

- Pak xeng

- Phoukhoun
- Viengkham
- Phonxay

### 7. Savannakhet:

- Thapangthong
- Nong
- Phin
- Vilabuly
- Sepon

### 8. Salavan:

- Samuoi
- Ta oi
- Toomlarn

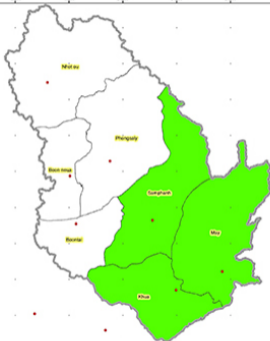
### 9. Xekong:

- Kaleum
- Dakcheung
- Lamarm

### 10. Attapeu:

- Sanamxay
- Sanxay
- Phouvong

Phongsaly Province



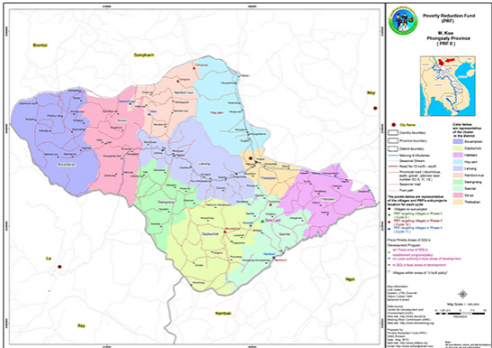
Legend

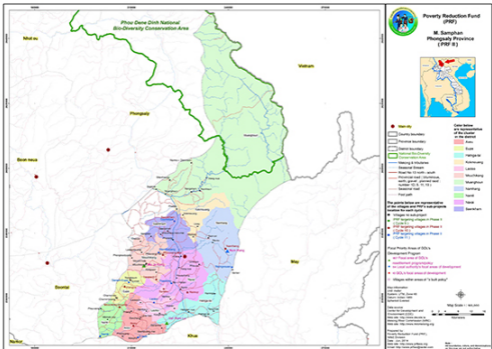
- Main city
- ▭ Country boundary
- ▭ Province boundary
- ▭ District boundary
- Targeting District



Map Scale 1 : 750,000



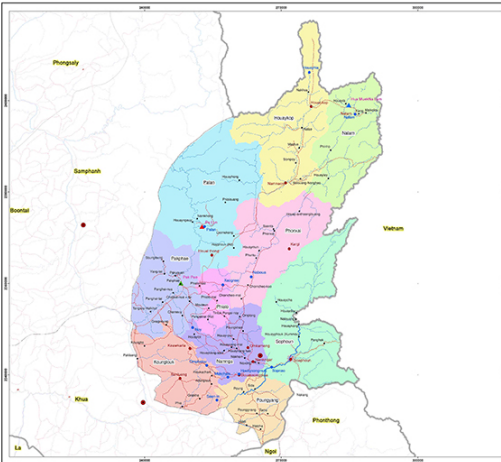






Poverty Reduction Fund  
(PRF)

M. Mai  
Phongsaly Province  
(PRF II)



- City Name**
- City Name
  - Country boundary
  - Province boundary
  - District boundary
  - Mekong & tributaries
  - Seasonal stream
  - Road No 13 north-south
  - Provincial road (1st/2nd class, north-south, general; national road number 10, 9, 11, 16)
  - Seasonal road
  - Foot path
- Color below are representative of the cluster in the district**
- Houaphong
  - Phongsavan
  - Phongsavan
  - Phongsavan
  - Phongsavan
  - Phongsavan
  - Phongsavan
  - Phongsavan
  - Phongsavan
  - Phongsavan
  - Phongsavan
- The points below are representative of all the villages and PRF's sub projects locations for each cycle**
- Villages not sub project
  - PRF targeting villages in Phase I (Cycle II)
  - PRF targeting villages in Phase I (Cycle III)
  - PRF targeting villages in Phase I (Cycle IV)

- Local Priority Areas of GDP's Development Program**
- GDP's local areas of development
  - GDP's local areas of development
  - GDP's local areas of development
  - GDP's local areas of development
  - GDP's local areas of development
  - GDP's local areas of development
  - GDP's local areas of development
  - GDP's local areas of development
  - GDP's local areas of development
  - GDP's local areas of development

**Map Information**  
 Date: 2014  
 Scale: 1:100,000  
 Author: UNDP  
 Contact: UNDP  
 Email: UNDP  
 Website: UNDP



**Data source:**  
 Center for Development and  
 Cooperation (CDC)  
 Website: <http://www.cdc.gov>  
 Contact: UNDP  
 Email: UNDP  
 Website: UNDP

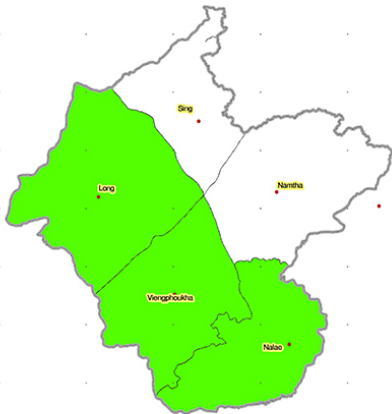
**Prepared by:**  
 Poverty Reduction Fund (PRF)  
 4000, London  
 Date: Jun, 2014  
 Website: <http://www.prffund.org>  
 Email: [PRF@prffund.org](mailto:PRF@prffund.org)

**Note:**  
 All boundaries, names, and information  
 are for reference only and do not constitute  
 an official UNDP position.

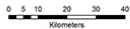
Louangnamtha Province



- ລິ້ງຄານ  
Legend
- ບຸດເຊີຍທົ່ວ  
Main city
  - ▭ ຜູນແຜນສາມາດເຮັດ  
Country boundary
  - ▭ ຜູນແຜນຂອບເຂດ  
Province boundary
  - ▭ ຜູນແຜນຂອບເຂດ  
District boundary
  - ເມັດປະເພນີ ກະຮວງ II  
PPF II's Targeting Districts



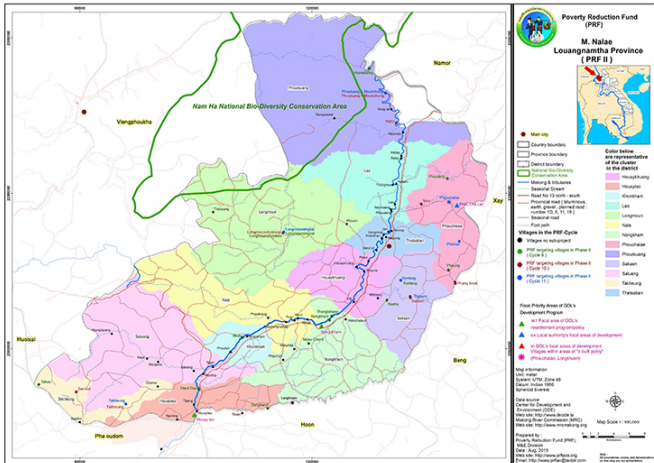
Map Scale 1 : 600,000



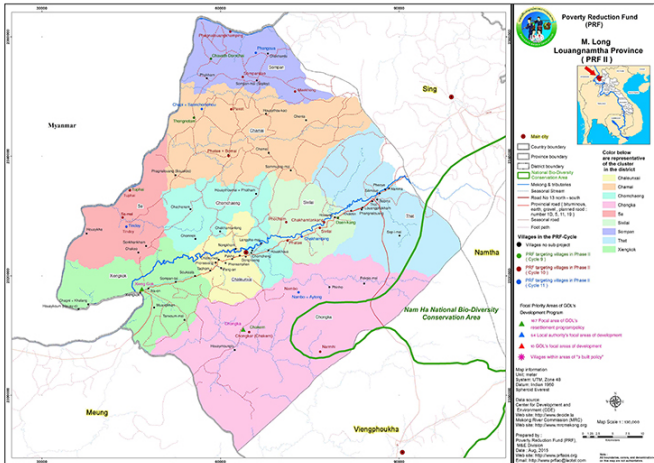


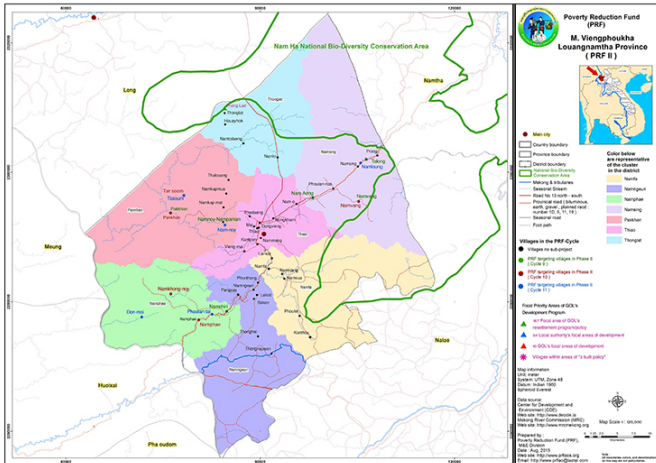
## Poverty Reduction Fund (PRF)

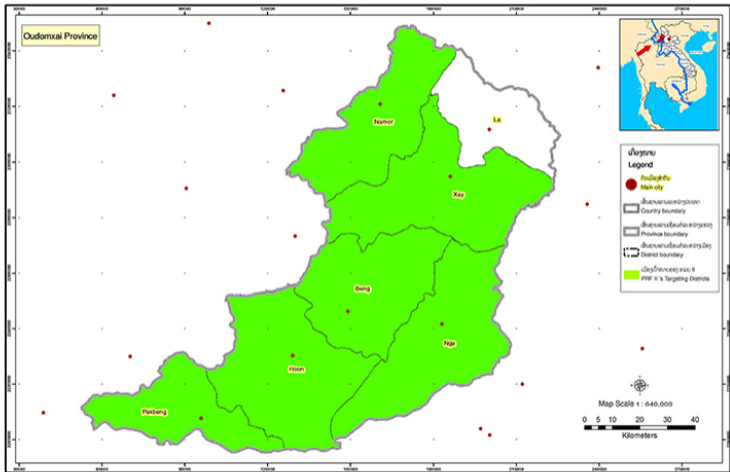
### M. Nalae Louangnamtha Province (PRF II)

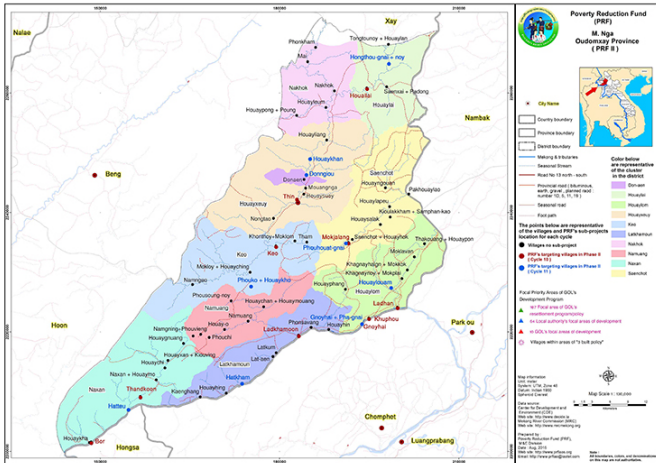






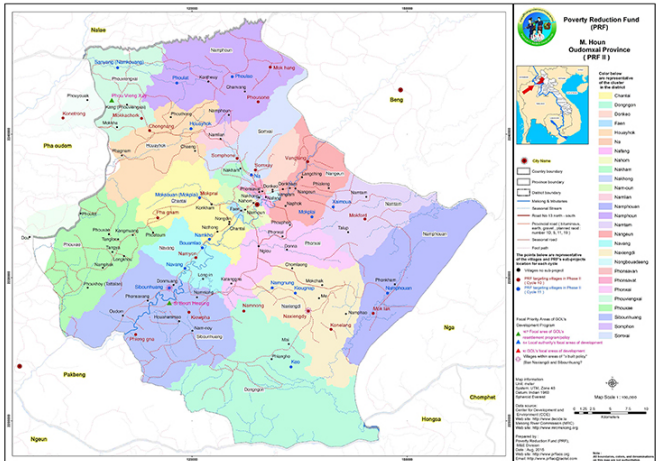






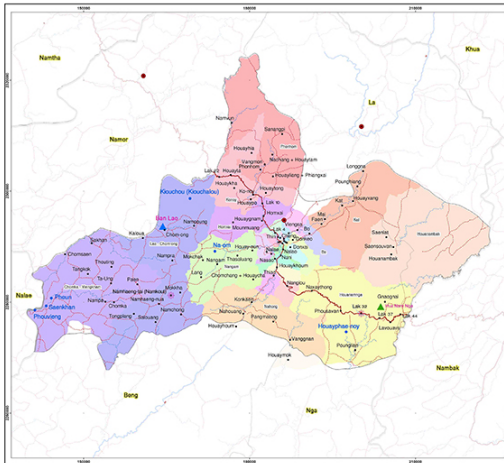














### Poverty Reduction Fund (PRF)

#### M. Xai Oudomxay Province (PRF II)



**City Name**

- Country boundary
- Province boundary
- District boundary
- Making & tributaries
- Seasonal Stream
- Road No 13 north-south
- Provincial road (Sisoumouk, earth, gravel, planned road : number 10, 5, 11, 18)
- Seasonal road
- Foot path

The points below are representative of the villages and PRF's sub-projects location for each cycle

- Villages no sub-project
- PRF's targeting villages in Phase II (Cycle 10)
- PRF's targeting villages in Phase II (Cycle 11)

Local Priority Areas of GOL's Development Program

- ▲ Local area of GOL's development program
- ▲ Local authority's local area of development
- ▲ GOL's local area of development
- ▲ Villages within area of "3 full policy" (Banthongkhe, Thongkhe, Lak 10)

Map information

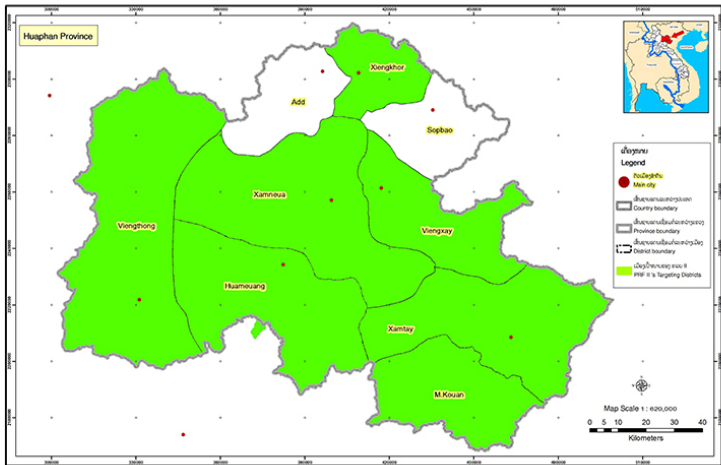
Unit: meter  
 System: UTM Zone 48  
 Datum: Indian 1960  
 Spheroid: Everest

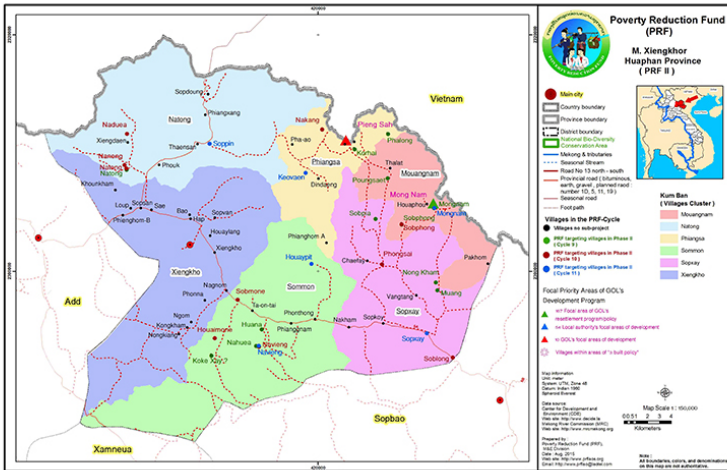
Data source:  
 Center for Development and Environment (CDE)  
 Web site: <http://www.cde.or.la>  
 Web site: <http://www.mekongrivercommission.org>  
 Web site: <http://www.prf.orf.gov.la>

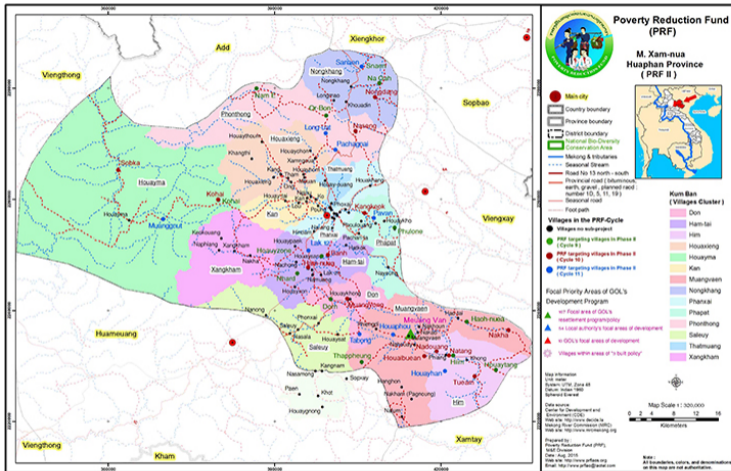
Prepared by:  
 Center for Development and Environment (CDE)  
 Date: Aug 2015  
 Web site: <http://www.prf.orf.gov.la>  
 E-mail: <http://www.prf.orf.gov.la>

Map Scale = 1:600,000









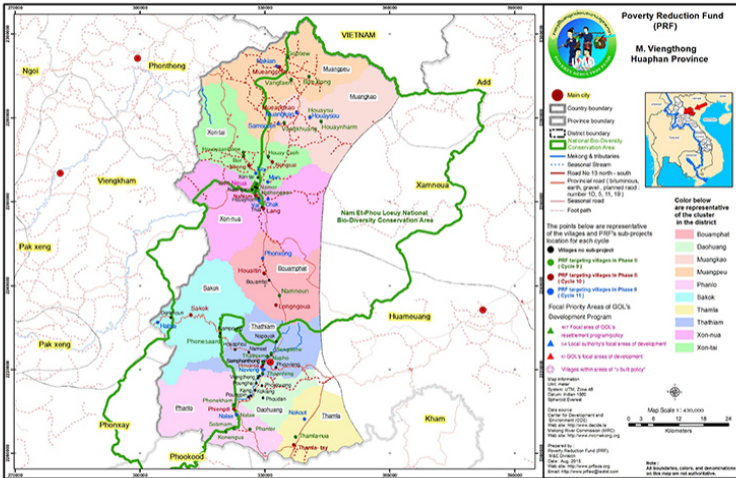
Map shows Kumban

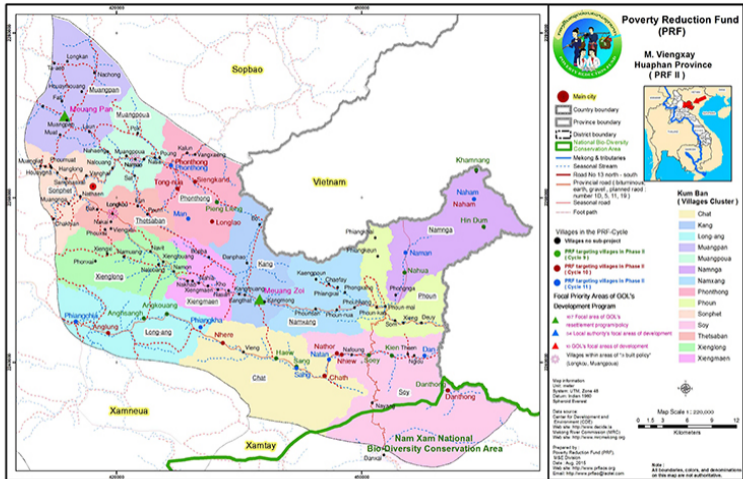


Poverty Reduction Fund (PRF)

M. Xam-tai Huaphan Province (PRF II)









## Poverty Reduction Fund (PRF)

### M. Huamuang Huaphan Province (PRF II)



Country boundary

Province boundary

District boundary

National Bio-Diversity Conservation Area

Making & tributaries

Seasonal stream

Road No. 13 north - south

Provincial road (bituminous, earth, gravel, planned road; number 1D, 5, 11, 19)

Seasonal road

Foot path

Villages in the PRF-Cycle

Villages as sub-project

PRF targeting villages in Phase II (Cycle I)

PRF targeting villages in Phase II (Cycle II)

PRF targeting villages in Phase II (Cycle III)

Villages within area of 'to build policy' (Lanxiang, Soplo)

PRF Priority Area of 90% Development Program

PRF Priority Area of 90% Development Program

PRF Priority Area of 90% Development Program

PRF Priority Area of 90% Development Program

PRF Priority Area of 90% Development Program

PRF Priority Area of 90% Development Program

PRF Priority Area of 90% Development Program

PRF Priority Area of 90% Development Program

PRF Priority Area of 90% Development Program

PRF Priority Area of 90% Development Program

PRF Priority Area of 90% Development Program

PRF Priority Area of 90% Development Program

PRF Priority Area of 90% Development Program

### Kum Ban (Villages Cluster)

Khangkhaio

Lanxiang

Muang-o

Muangbo

Muanglaen

Muangpeun

Phonxai

Songkhao

Soplo

PRF Priority Area of 90% Development Program

PRF Priority Area of 90% Development Program

PRF Priority Area of 90% Development Program

PRF Priority Area of 90% Development Program

PRF Priority Area of 90% Development Program

PRF Priority Area of 90% Development Program

PRF Priority Area of 90% Development Program

PRF Priority Area of 90% Development Program

PRF Priority Area of 90% Development Program

PRF Priority Area of 90% Development Program

PRF Priority Area of 90% Development Program

Map information

Unit: meter

System: UTM, Zone 48

Datum: Indian 1940

Spheroid: Everest

Data source

Center for Development and Environment (CDE)

Web site: <http://www.cede.or.lk>

Web site: <http://www.mrc.or.lk>

Web site: <http://www.prfa.or.lk>

Prepared by:

Poverty Reduction Fund (PRF),

Mid-Cambodia

Date: Aug. 2015

Web site: <http://www.prfa.or.lk>

Email: [prfa@prfa.or.lk](mailto:prfa@prfa.or.lk)



Map Scale 1:200,000



Kilometers

Kilometers

Kilometers

Kilometers

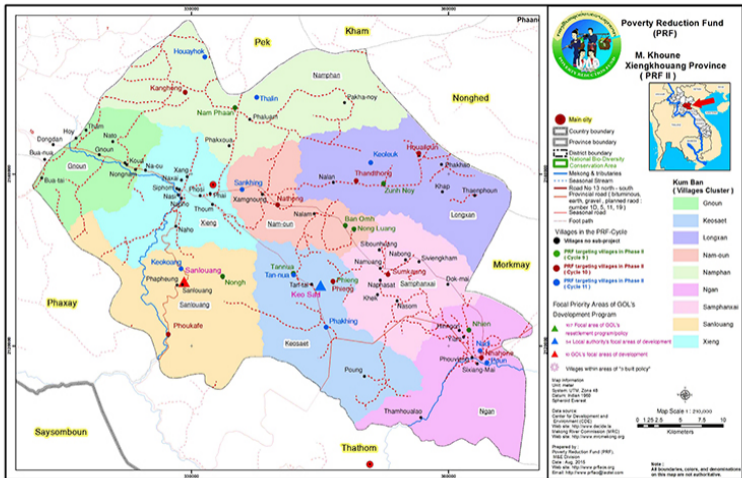
Kilometers

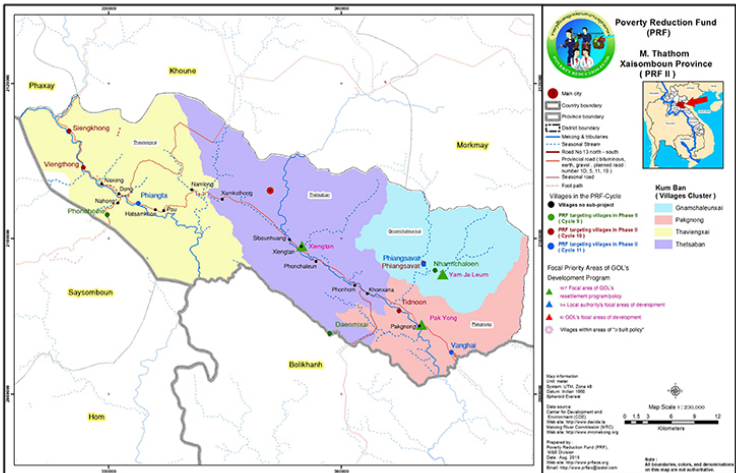
Kilometers

Kilometers









Map shows Kumban



Poverty Reduction Fund (PRF)

M. Nonghet Xiengkhouang Province (PRF II)



- Main city
- ▭ Country boundary
- ▭ Province boundary
- ▭ District boundary
- ▭ National Bio-Diversity Conservation Area
- ▭ Making & tributaries
- ▭ Seasonal Stream
- ▭ Road No 13 north-south
- ▭ Provincial road (bituminous, earth, gravel, planned road: number 10, 5, 11, 19)
- ▭ Seasonal road
- ▭ Foot path

Kum Ban (Villages Cluster)

- ▭ Oua
- ▭ Houaylom
- ▭ Keobon
- ▭ Khangphanien
- ▭ Nonghet-tai
- ▭ Pha-ae
- ▭ Phakke
- ▭ Pho
- ▭ Phouhouxang
- ▭ Phoungseng
- ▭ Sandon
- ▭ Thetsaban

Villages in the PRF-Cycle

- Villages no sub-project
- PRF targeting villages in Phase II (Cycle 9)
- PRF targeting villages in Phase II (Cycle 10)
- PRF targeting villages in Phase II (Cycle 11)

Focal Priority Areas of GOL's Development Program

- ▭ Focal area of GOL's investment program (to look at only's focal area of development)
- ▭ GOL's focal area of development (Khangphanien, Phoungong)
- ▭ Villages within area of 'to build policy' (Khangphanien, Phoungong)

Map information

Scale: meter  
System: UTM, Zone 48  
Datum: Indian 1960  
Spheroid: Everest

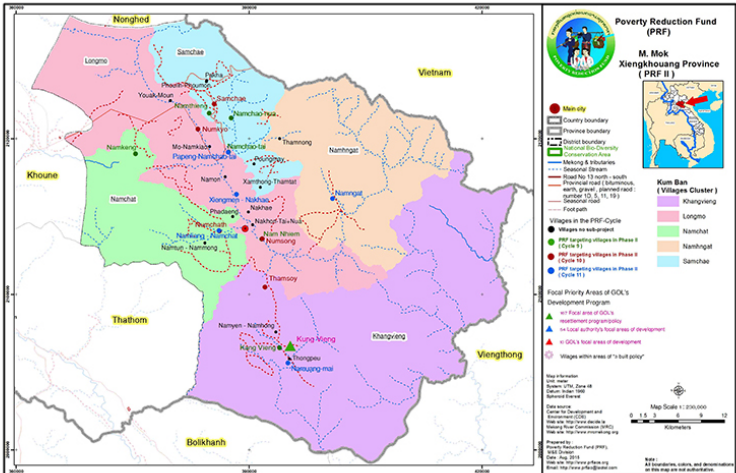
Data source:  
Center for Development and Environment (CDE)  
Map via: <http://www.openstreetmap.org>  
Making River Commission (MRC)  
Map via: <http://www.making.org>

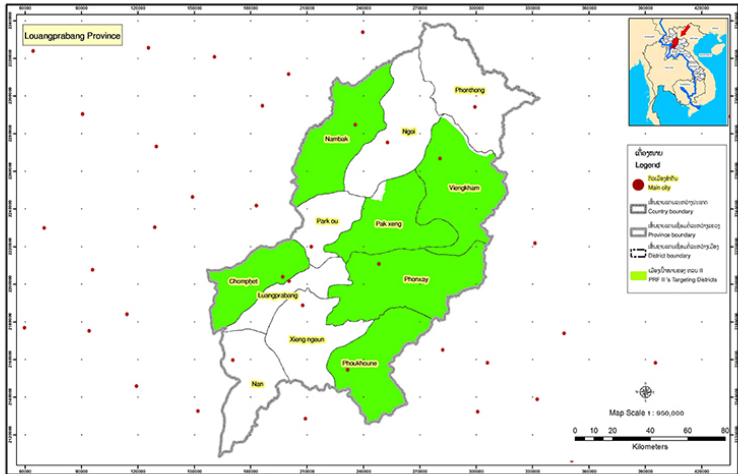
Prepared by:  
Poverty Reduction Fund (PRF),  
MRC Division

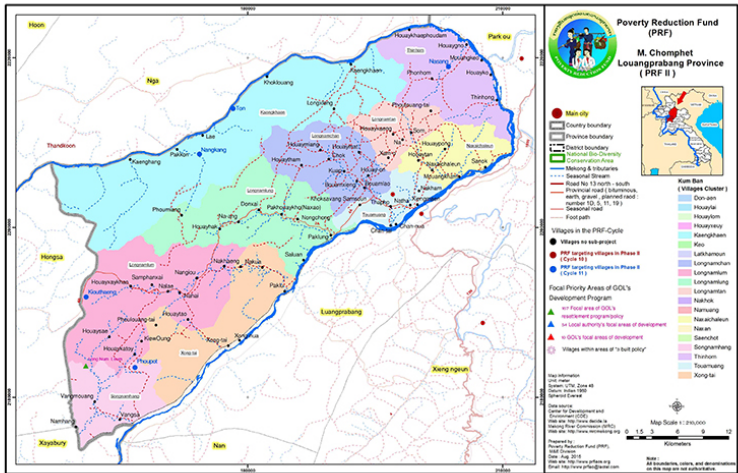
Date: Aug 2014  
Map via: <http://www.prffao.org>  
Email: [map@www.prffao.org](mailto:map@www.prffao.org)

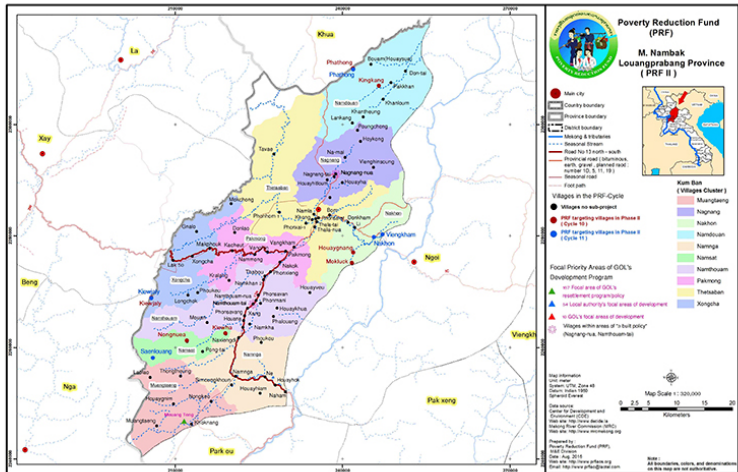
Note:  
All boundaries, colors, and denominations on this map are not authoritative.



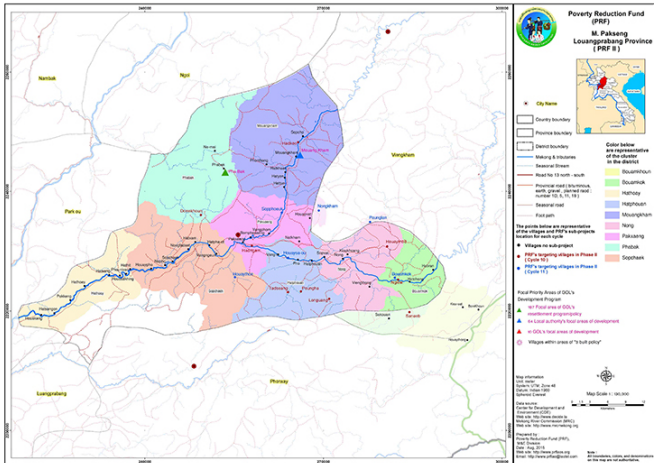


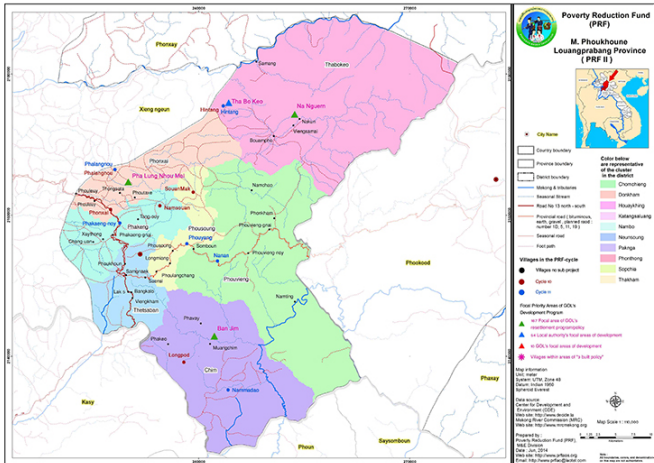


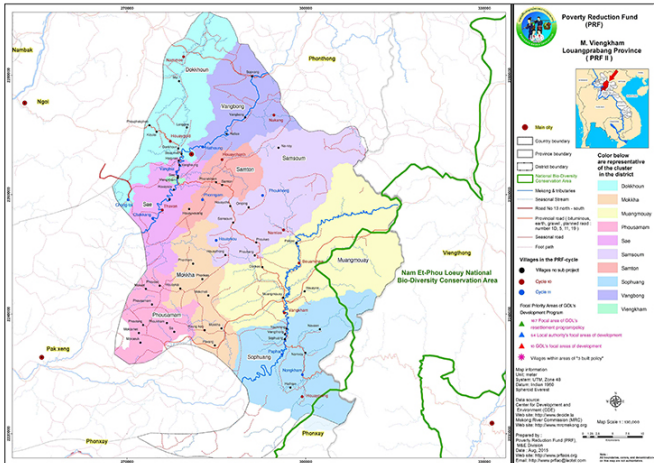


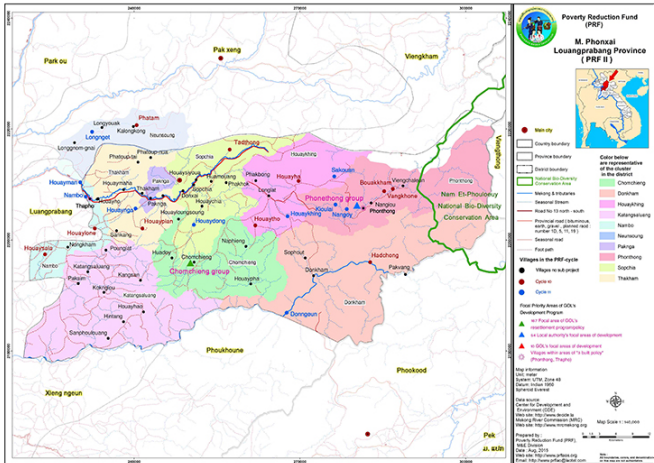


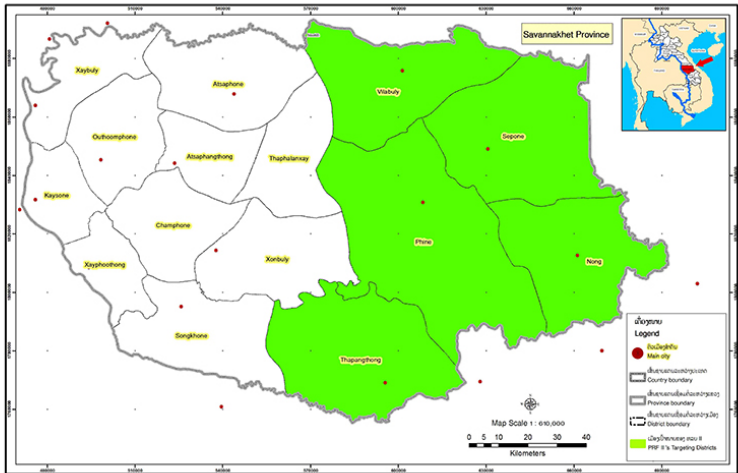


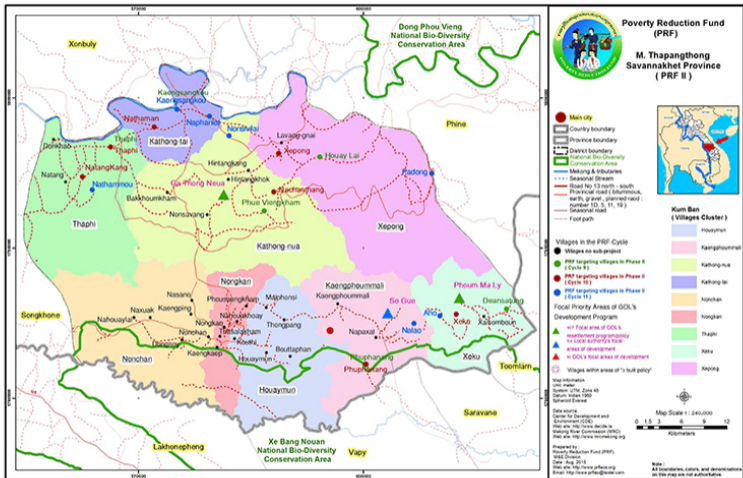


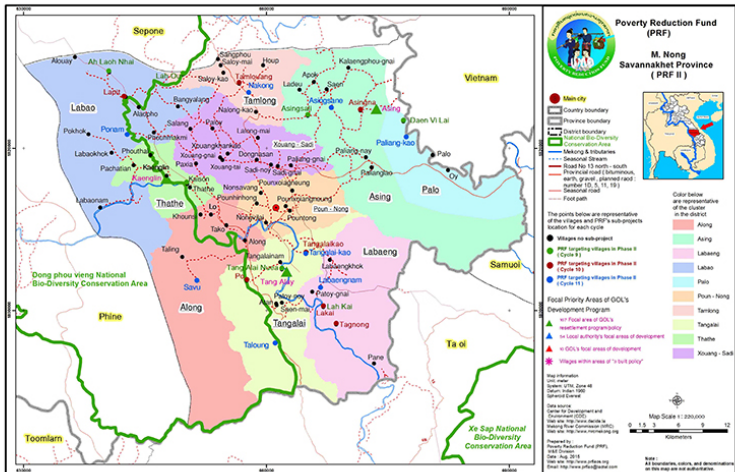














Poverty Reduction Fund  
(PRF)

M. Phine  
Savannakhet Province  
(PRF II)



- Main city
- ▭ Country boundary
- ▭ Province boundary
- ▭ District boundary
- ▭ National Bio-Diversity Conservation Area
- ▭ Mekong & tributaries
- ▭ Seasonal Stream
- ▭ Road No 13 north-south
- ▭ Provincial road (bituminous, earth, gravel, planned road number 10, 5, 11, 19)
- ▭ Seasonal road
- ▭ Foot path

Villages in the PRF-Cycle

- Villages not sub-project
- PRF targeting villages in Phase II (Cycle 8)
- PRF targeting villages in Phase I (Cycle 10)
- PRF targeting villages in Phase I (Cycle 11)

Focal Priority Areas of GOL's Development Program

- ▲ in focal area of GOL's settlement program/policy
- ▲ in local authority's focal areas of development
- ▲ in GOL's focal areas of development
- ★ Villages within areas of "to build policy"

Map information  
Unit: meter  
System: UTM, Zone 48  
Datum: Indian 1960  
Spheroid: Everest

Data source  
Center for Development and Environment (CDE)  
Map site: Map frame details  
Mekong River Commission (MRC)  
Map site: Map frame recording map

Prepared by  
Poverty Reduction Fund (PRF),  
MRC Division  
Date: Aug 2014  
Map site: Map frame pdf/eng  
Email: Map frame prf@donor.com

Kumban  
(Villages group)

- ▭ Ghang
- ▭ Ke
- ▭ Khanin
- ▭ Nape
- ▭ Nathong
- ▭ Nonlai
- ▭ Phalong
- ▭ Phokham
- ▭ Sakhouang
- ▭ Savu
- ▭ Tathake
- ▭ Thounkham
- ▭ Veunhongkham
- ▭ Xanamixai
- ▭ Xesavang



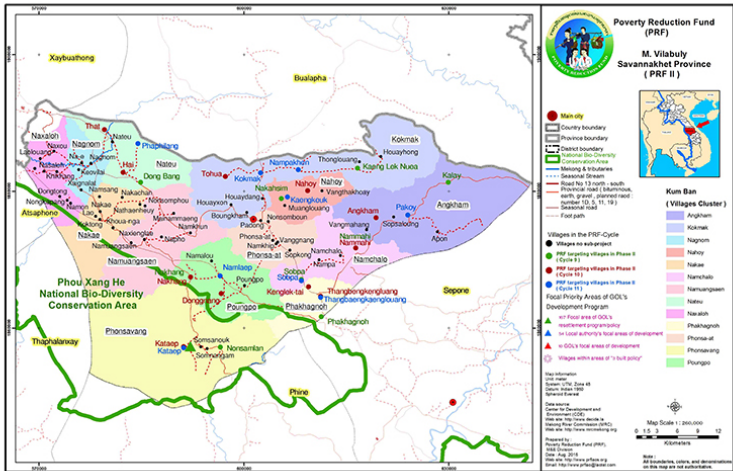
Map Scale 1:340,000

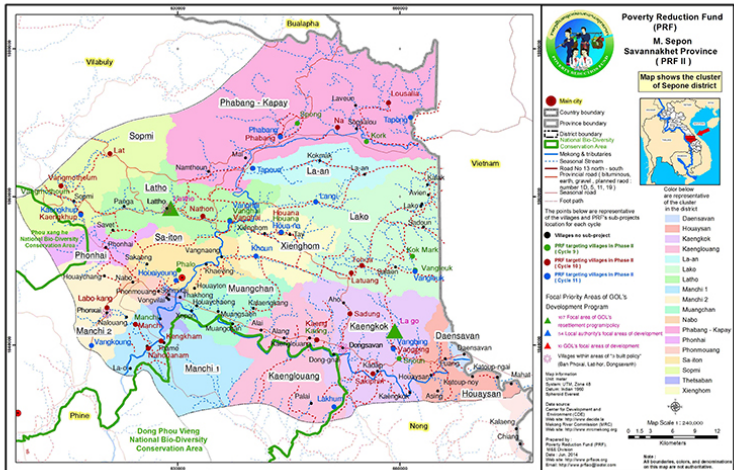
0 2 4 6 8 10 12 14 16

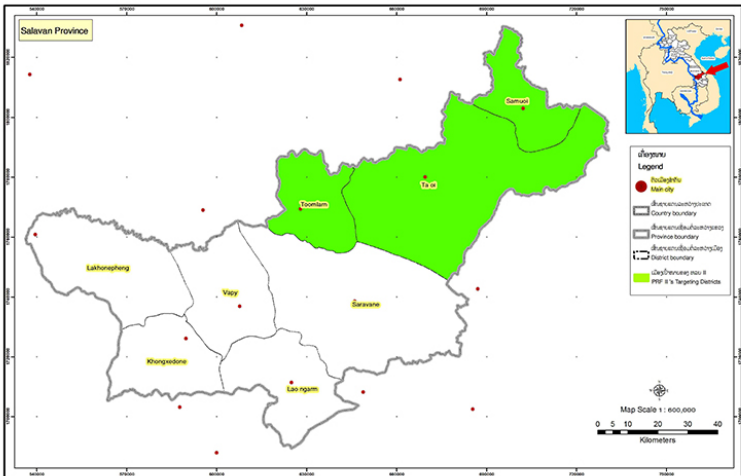
Kilometers

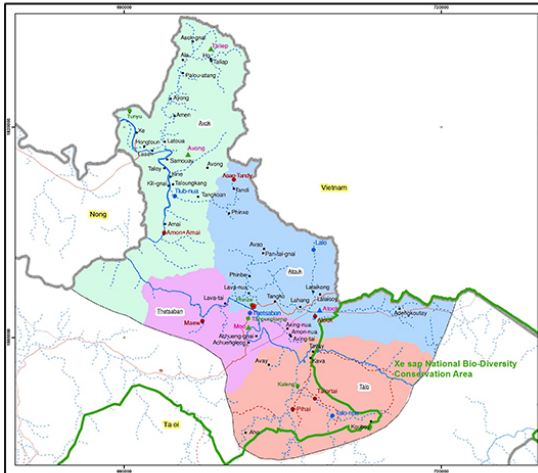
Note:  
All boundaries, colors, and denominations  
on this map are not authoritative.











Poverty Reduction Fund  
(PRF)

M. Samouay  
Salavan Province  
(PRF II)



Kum Ban  
(Villages Cluster)

- Atouk
- Asok
- Talo
- Thetouban

- Main city
- ▭ Country boundary
- ▭ Province boundary
- ▭ District boundary
- ▭ National Bio-Diversity Conservation Area
- ▭ Conservation Area
- ▬ Mekong & tributaries
- ▬ Seasonal Stream
- ▬ Road No 13 north-south
- ▬ Provincial road (bituminous, earth, gravel, planned road: number 10, 5, 11, 19)
- ▬ Seasonal road
- ▬ Foot path

Villages in the PRF-Cycle

● Villages no sub-project

● PRF targeting villages in Phase II (Cycle I)

● PRF targeting villages in Phase II (Cycle II)

● PRF targeting villages in Phase II (Cycle III)

● PRF targeting villages in Phase II (Cycle III)

● PRF targeting villages in Phase II (Cycle III)

● PRF targeting villages in Phase II (Cycle III)

● PRF targeting villages in Phase II (Cycle III)

● PRF targeting villages in Phase II (Cycle III)

● PRF targeting villages in Phase II (Cycle III)

● PRF targeting villages in Phase II (Cycle III)

● PRF targeting villages in Phase II (Cycle III)

● PRF targeting villages in Phase II (Cycle III)

● PRF targeting villages in Phase II (Cycle III)

● PRF targeting villages in Phase II (Cycle III)

● PRF targeting villages in Phase II (Cycle III)

● PRF targeting villages in Phase II (Cycle III)

● PRF targeting villages in Phase II (Cycle III)

● PRF targeting villages in Phase II (Cycle III)

● PRF targeting villages in Phase II (Cycle III)

● PRF targeting villages in Phase II (Cycle III)

● PRF targeting villages in Phase II (Cycle III)

● PRF targeting villages in Phase II (Cycle III)

● PRF targeting villages in Phase II (Cycle III)

● PRF targeting villages in Phase II (Cycle III)

● PRF targeting villages in Phase II (Cycle III)

● PRF targeting villages in Phase II (Cycle III)

● PRF targeting villages in Phase II (Cycle III)

● PRF targeting villages in Phase II (Cycle III)

● PRF targeting villages in Phase II (Cycle III)

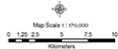
● PRF targeting villages in Phase II (Cycle III)

Map information  
Unit: meter  
System: UTM, Zone 48  
Datum: Indian 1960  
Spheroid: Everest

Data source:

Center for Development and  
Environment (CDE)  
Web site: <http://www.cde.lk>  
Mekong River Commission (MRC)  
Web site: <http://www.mekong.org>

Prepared by:  
Poverty Reduction Fund (PRF),  
M&E Division  
Date: Aug 2015  
Web site: <http://www.prf.la>  
Email: [prf@prf.la](mailto:prf@prf.la)



Note:  
All boundaries, colors, and denominations  
on this map are not authoritative.

Map shows Kumban



Poverty Reduction Fund (PRF)

M. Ta-Oy Salavan Province (PRF II)



- Main city
- Country boundary
- Province boundary
- District boundary
- National Bio-Diversity Conservation Area
- Mekong & tributaries
- Seasonal Stream
- Road No. 13 north-south
- Provincial road (bituminous, earth, gravel, planned road: number 10, 5, 11, 13)
- Seasonal road
- Foot path

The points below are representative of the villages and PRF's sub-projects location for each cycle

- Villages no sub-project
- PRF targeting villages in Phase II (Cycle 9)
- PRF targeting villages in Phase II (Cycle 10)
- PRF targeting villages in Phase II (Cycle 11)

Focal Priority Areas of GOL's Development Program

- ▲ GOL's focal area of GOL's resettlement program/policy
- ▲ Local authority's focal area of development
- ▲ GOL's focal area of development
- Villages within area of "hot spot policy"

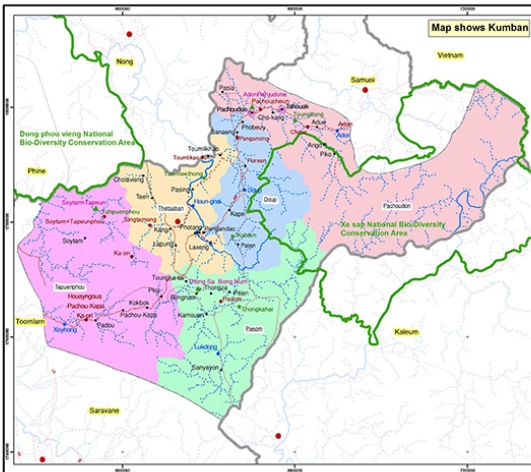
Map information  
Scale: meter  
System: UTM, Zone 48  
Datum: Indian 1960  
Spheroid: Everest

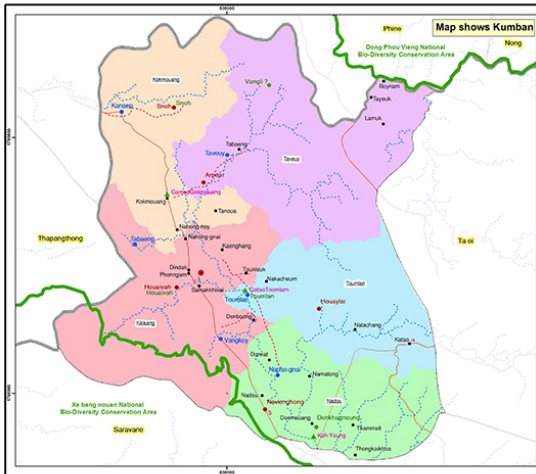
Data source:  
Center for Development and Governance (CDG)  
Map file: <http://www.demris.com>  
Mekong River Commission (MRC)  
Map file: <http://www.mekong.org>

Prepared by:  
Poverty Reduction Fund (PRF),  
WFP Division  
Date: Jan 2014  
Map file: <http://www.prfd.org>  
Email: [prfd@prfd.org](mailto:prfd@prfd.org)



Note:  
All boundaries, colors, and denominations on this map are not authoritative.





Map shows Kumban



Poverty Reduction Fund (PRF)

M. Toomlan Salavan Province (PRF II)



- Main city
- ▭ Country boundary
- ▭ Province boundary
- ▭ District boundary
- ▭ National Bio-Diversity Conservation Area
- ▬ Mekong & tributaries
- ▬ Seasonal Stream
- ▬ Road No 13 north-south
- ▬ Provincial road ( bituminous, earth, gravel, planned road : number 1D, 5, 11, 19 )
- ▬ Seasonal road
- ▬ Footpath

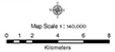
- The points below are representative of the villages and PRF's sub-projects location for each cycle
- Villages no sub-project
  - PRF targeting villages in Phase II ( Cycle 1 )
  - PRF targeting villages in Phase II ( Cycle 10 )
  - PRF targeting villages in Phase II ( Cycle 11 )

- Color below are representative of the cluster in the district
- Kaseing
  - Khekouang
  - Nadeu
  - Sawy
  - Tauntan

Focal Priority Areas of GOL's Development Program

- ▲ not Focal area of GOL's development program
- ▲ Local authority's focal area of development
- ▲ GOL's focal area of development
- Villages within areas of "to built policy"

Map information  
 Unit: meter  
 System: UTM, Zone 49  
 Datum: Indian 1960  
 Spheroid: Everest



Drawn by:  
 Center for Development and Environment (CDE)  
 Web site: <http://www.cde.lk>  
 Mekong River Commission (MRC)  
 Web site: <http://www.mekong.org>

Prepared by:  
 Poverty Reduction Fund (PRF),  
 M&E Division  
 Date: Aug. 2015  
 Web site: <http://www.prf.la>  
 Email: [prf@wfp.org](mailto:prf@wfp.org)

Note: All boundaries, colors, and denominations on this map are not authoritative.

Sekong Province



Kaloun

Thakeng

Lamam

Dakheung

ເມັດງານ  
Legend

● ບັນເທົາ  
Main city

▭ ມົນຕາແຂວງ  
County boundary

▭ ມົນຕາປະເທດ  
Province boundary

▭ ມົນຕາເມັດງານ  
District boundary

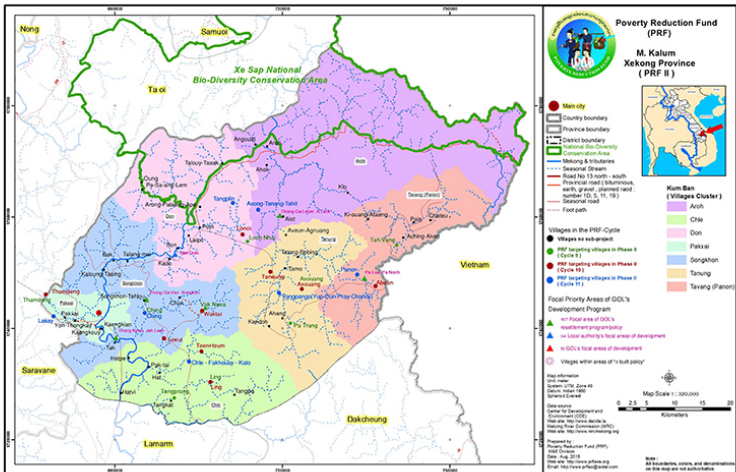
■ ເມັດງານປາກ  
HAI II's Targeting Districts



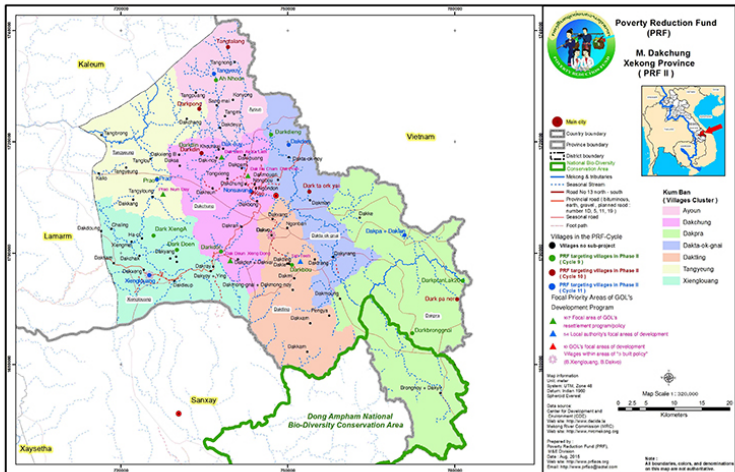
Map Scale 1 : 520,000

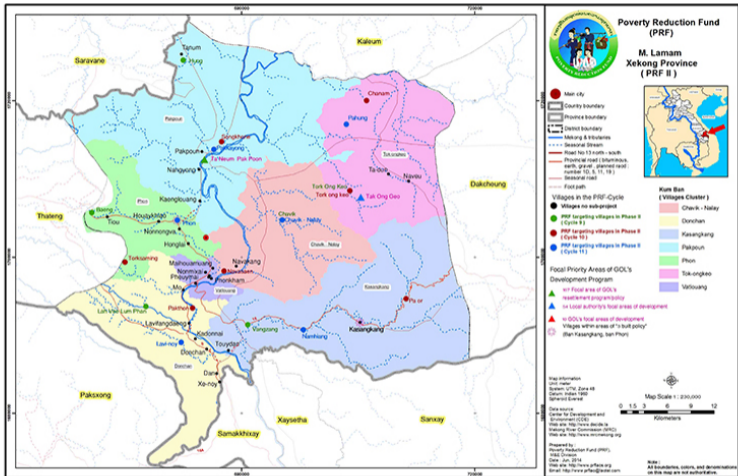
0 5 10 20 30 40

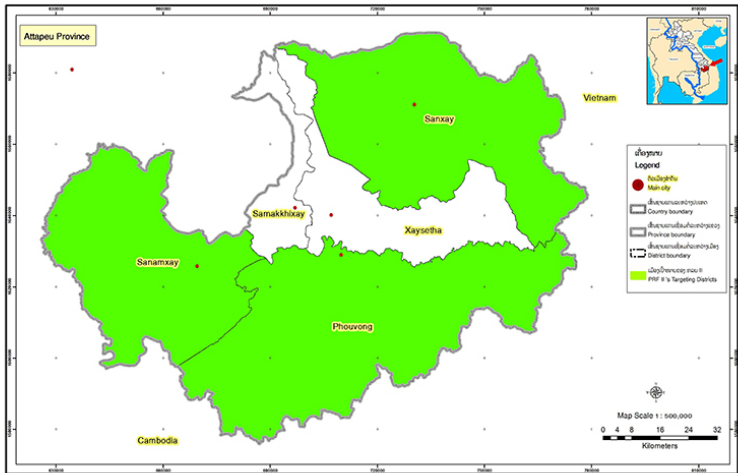
Kilometers

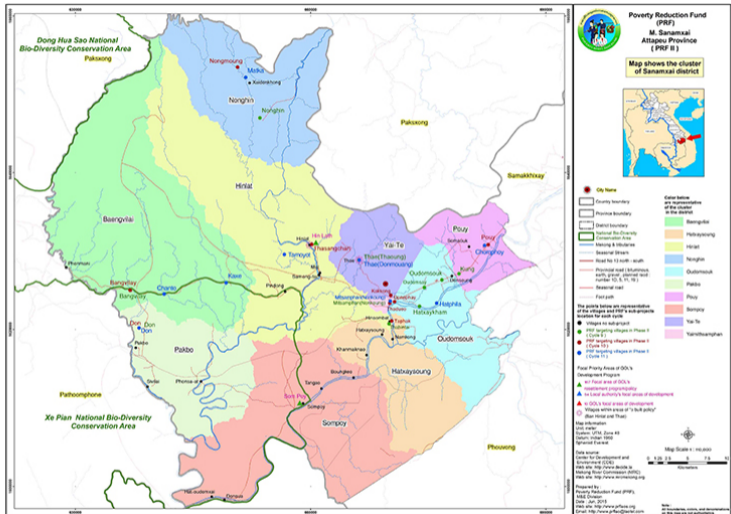


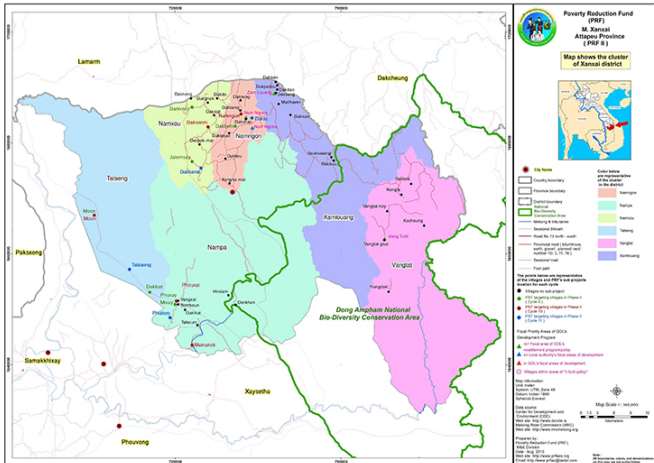


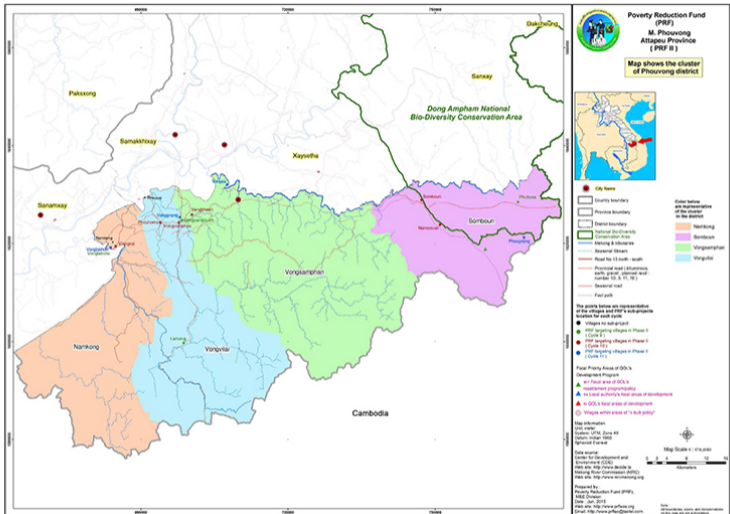












ມາຈາກຄວາມຕ້ອງການຂອງປະຊາຊົນ, ໂດຍປະຊາຊົນ

ແລະ ເພື່ອຕົນປະໂຫຍດຂອງປະຊາຊົນ

FROM THE PEOPLE, BY THE PEOPLE,  
FOR THE PEOPLE

ສ້າງຕັ້ງຂຶ້ນຄືນ

ສະໜັບສະໜືນເປັນເປົ້າໝາຍ ມາດຕະການສູງກວ່າເປົ້າໝາຍ

ສ້າງຕັ້ງ ຂຶ້ນ ກຸ່ມ

ຈະເປັນໄປໄດ້ ຈົນເຮັດວ່າໄດ້, ຈົນເຮັດວ່າໄດ້

P.O. BOX 4025, VIENTIANE, LAOS

GOVERNMENT'S OFFICE

National Committee for Rural Development

& Poverty Eradication

POVERTY REDUCTION FUND

Manthasab Road,  
Souravong Village,  
Chanthabouly District,  
P.O. Box 4025.

T +856 812 261 479 / 262 480

F +856 812 261 481

E info@grf Laos.org

W www.grf Laos.org

ສະໜັບສະໜືນ ດ້ວຍການສູນ

