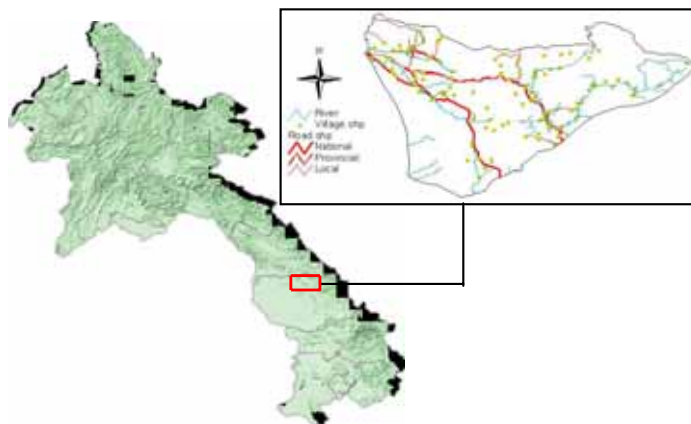


Progress activity of Vilabury District, as of June 2004

General Information

Savannahet Province:	Total	Women
Population of Province (NSC; year 2003):	833,900	425,400
Total Number of districts:	15	
<i>Sepone, Nong, Vilaboury, Khanthabouly, Outhoumphone, Atsapangthong, Phine, hapangthong, Songkhone, Champhone, Xonbuly, Xaybuly, Atsapone, Xayphouthong and Thaphanlanxay.</i>		
Total Number of districts covered by PRF:	3	
<i>Sepone, Nong and Vilaboury</i>		
Vilabury District:	Total	Women
District Population (2003)	28,576	
Total Number of Khets:	16	
Total Number of Villages:	101	
Total Number of "Poor" Villages*:	77	
% of villages without access to health services	12%	
% of villages without safe water supply	27%	
% of villages without road	68%	
% of villages without access to School	7%	
Main ethnic groups in the district: (NSC Census 95)		
<i>Phoutai, Makong, Tri, Lao</i>		

Maps of Lao PDR showing Champasack and Nong



Initially requested village needs

Results after Village Needs and priorities Assessment and Prioritization

Description	Total	%
Number of Village Needs (activities) expressed by villagers by 6 priorities	605	
Number of Village Needs (activities) expressed by women by 3 priorities	133	44%
Number of Village Needs (activities) expressed by men by 3 priorities	170	56%
Village Needs after consolidation at Khet level (Khet Priorities)	246	

Selected / approved sub-projects for the period 2003-2004 Cycle I

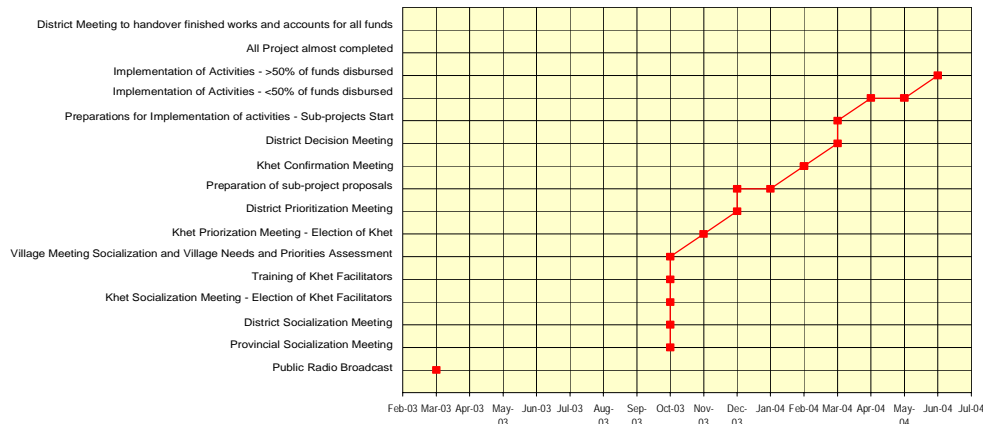
Results after sub-project appraisal and District Decision Meeting

Description	Total	Kip	US\$
PRF Vilabury budget allocation 2003	1,113,228,000		107,000
PRF Contribution to sub-project implementation	1,131,693,228		108,808
Village Contribution (cash / kind) to project implementation	177,973,300		17,106
Total Cost for Sub-Projects:	1,309,666,528		125,881
% of village contribution compared to total cost for sub-projects	13.6%		-
Average PRF contribution per Sub-project	9,367,016		5,725
Average PRF contribution per participating village	18,253,117		1,754
Number of Villages benefiting from 2003 funding round	62	-	
Number of Poor Villages benefiting from 2003 funding round	43	-	
Number and percentage of beneficiaries in 2003 funding round	7,354	29%	
Number of Khets benefiting from 2003 funding round	16	-	
Number of Sub-Projects to be implemented in 2003 funding round	19	-	
Percentage of selected sub-projects proposed by women	-	30%	
Average Number of Sub-projects / Khet	1.2	-	
Average Number of Village activities / Khet	3		

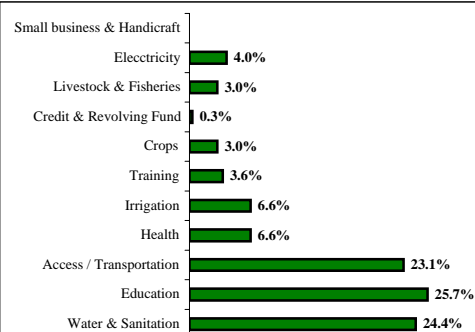
Sub-project budget allocation per sector	Allocation (Kip)	Percentage %
Water & Sanitation	133,084,013	22.6 %
Access/ Transport	525,962,778	48.4 %
Health	120,449,697	14.5 %
Irrigation	58,561,661	1.6 %
Education	286,066,363	6.5 %
Training	7,568,716	6.5 %
Total:	1,131,693,228	100 %

Chart of progress

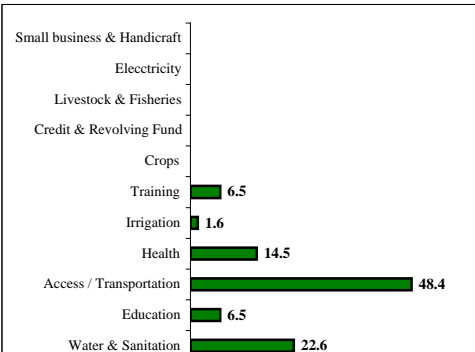
Activity progress for Vilabury District



Analysis of requested village needs by sector



Analysis of selected PRF sub-projects by sector



Exchange Rate: approx. 1 US\$ = 10,404 Kip, rate used on the day of District Decision Meeting

* Poverty indicators and "poor" villages are defined by the Prime Minister's Instruction No. 010/PM and the National Statistic Centre.